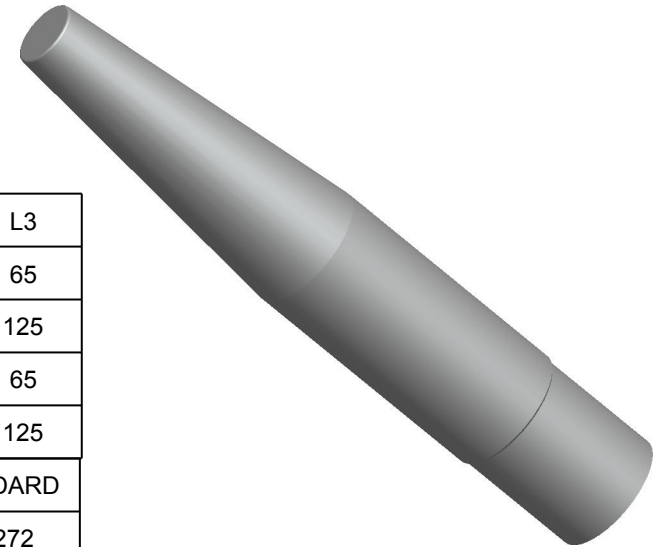
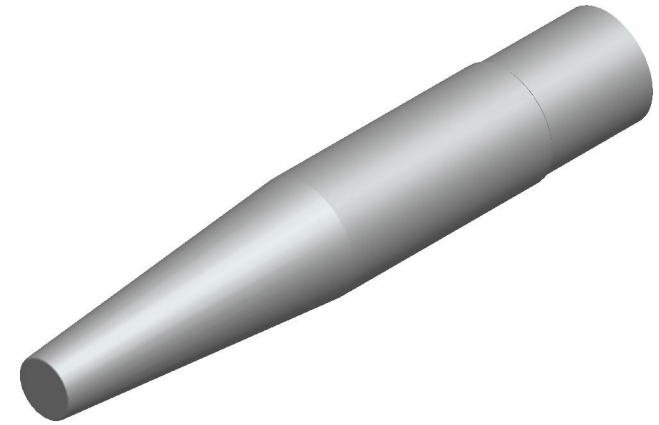


DETAIL- AA



FORM	L1	L2	L3
D1	140	50	65
D2	200	50	125
D4	200	110	65
D5	260	110	125

MATERIAL	MATERIAL(EN)	STANDARD
SS-2348-27	1.4404	EN 10272
13CrMo44	1.7335	DIN17243
C22.8	1.0460	DIN 17243

TOLERANCE ARE TO BE FOLLOWED IF NOT SPECIFIED DIN ISO 2768-(1991-06)									SHEET A4	SIGN.	DATE	DRAWING NO.
TOLERANCE CLASS	GENERAL TOLERANCE FOR LINEAR DIMENSIONS								DRAWN	VIRENDER	11-10.08	TTL-4651
	Limit deviations in mm nominal dimensions ranges								CHECKED			
	0.5 to 3	>3 to 6	>6 to 30	>30 to 120	>120 to 400	>400 to 1000	>1000 to 2000	>2000 to 4000	APPROVED			MATERIAL: - SEE TABLE
f (fine)	±0.05	±0.05	±0.1	±0.15	±0.2	±0.3	±0.5	-				
m (medium)	±0.1	±0.1	±0.2	±0.3	±0.5	±0.8	±1.2	±2.0				
c (coarse)	±0.2	±0.3	±0.5	±0.8	±1.2	±2.0	±3.0	±4.0				
v (very coarse)	-	±0.5	±1.0	±1.5	±2.5	±4.0	±6.0	±8.0				
									SCALE	ALL DIMENSIONS ARE IN MM. IF IN DOUBT PLEASE ASK.		TITLE: D-TYPE THERMOWELL
									NTS			PART NO: 951500-Dxx