



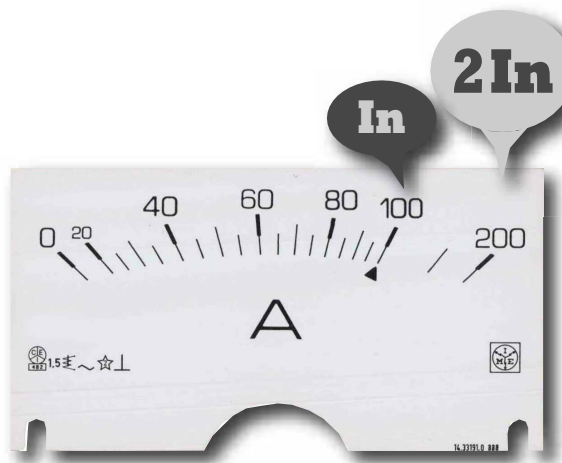
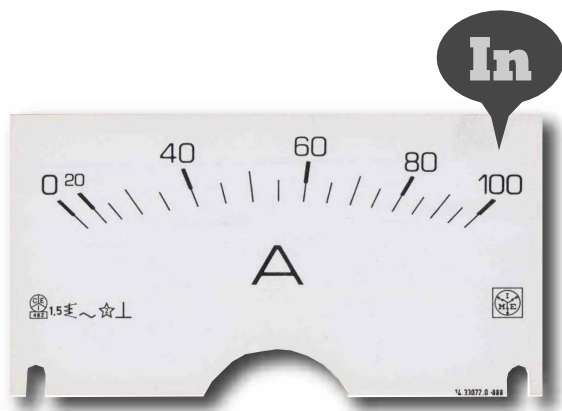
**Indicatori Analogici - NPE
per corrente alternata
NP2E - 76x58mm
NP3E - 94x73mm**

**NPE - Analog Meters
for alternating current
NP2E - 76x58mm
NP3E - 94x73mm**

AN

Indicazione diretta della corrente di ingresso o della corrente primaria del TA esterno
Equipaggio elettromagnetico
Ingresso diretto da 1...60A
Ingresso da TA esterno /5A oppure /1A
Versione per avviamento motore 2In
Ampiezza scala 90°
Precisione cl.1,5

Direct indication of input current or primary current of external CT
Moving iron equipment
Direct connection 1...60A
Input by external CT /5A or /1A
Version for starting motor 2In
Scale length 90°
Accuracy class 1,5



Inserzione Connection	da TA/5A on CT/5A		da TA/1A on CT/1A	
Scala / Scale	0...In		0...In	
Modello / Model	NP2E	NP3E	NP2E	NP3E
Dimensioni Dimensions	76 x58	94 x 73	76 x68	94 x 73

Portata / Range

CODICE DI ORDINAZIONE / ORDERING CODE

5A	ANK2D1A500	ANL2D1A500	ANK211A500	ANL211A500
10A	ANK251B100	ANL251B100	ANK211B100	ANL211B100
15A	ANK251B150	ANL251B150	ANK211B150	ANL211B150
20A	ANK251B200	ANL251B200	ANK211B200	ANL211B200
25A	ANK251B250	ANL251B250	ANK211B250	ANL211B250
30A	ANK251B300	ANL251B300	ANK211B300	ANL211B300
40A	ANK251B400	ANL251B400	ANK211B400	ANL211B400
50A	ANK251B500	ANL251B500	ANK211B500	ANL211B500
60A	ANK251B600	ANL251B600	ANK211B600	ANL211B600
70A	ANK251B700	ANL251B700	ANK211B700	ANL211B700
75A	ANK251B750	ANL251B750	ANK211B750	ANL211B750
80A	ANK251B800	ANL251B800	ANK211B800	ANL211B800
100A	ANK251C100	ANL251C100	ANK211C100	ANL211C100
120A	ANK251C120	ANL251C120	ANK211C120	ANL211C120
125A	ANK251C125	ANL251C125	ANK211C125	ANL211C125
150A	ANK251C150	ANL251C150	ANK211C150	ANL211C150
160A	ANK251C160	ANL251C160	ANK211C160	ANL211C160
200A	ANK251C200	ANL251C200	ANK211C200	ANL211C200
250A	ANK251C250	ANL251C250	ANK211C250	ANL211C250
300A	ANK251C300	ANL251C300	ANK211C300	ANL211C300
400A	ANK251C400	ANL251C400	ANK211C400	ANL211C400
500A	ANK251C500	ANL251C500	ANK211C500	ANL211C500
600A	ANK251C600	ANL251C600	ANK211C600	ANL211C600
700A	ANK251C700	ANL251C700	ANK211C700	ANL211C700
750A	ANK251C750	ANL251C750	ANK211C750	ANL211C750
800A	ANK251C800	ANL251C800	ANK211C800	ANL211C800
1.000A	ANK251D100	ANL251D100	ANK211D100	ANL211D100
1.200A	ANK251D120	ANL251D120	ANK211D120	ANL211D120
1.250A	ANK251D125	ANL251D125	ANK211D125	ANL211D125
1.500A	ANK251D150	ANL251D150	ANK211D150	ANL211D150
1.600A	ANK251D160	ANL251D160	ANK211D160	ANL211D160
2.000A	ANK251D200	ANL251D200	ANK211D200	ANL211D200
2.500A	ANK251D250	ANL251D250	ANK211D250	ANL211D250
3.000A	ANK251D300	ANL251D300	ANK211D300	ANL211D300
4.000A	ANK251D400	ANL251D400	ANK211D400	ANL211D400
5.000A	ANK251D500	ANL251D500	ANK211D500	ANL211D500
6.000A	ANK251D600	ANL251D600	ANK211D600	ANL211D600
8.000A	ANK251D800	ANL251D800	ANK211D800	ANL211D800
10.000A	ANK251E100	ANL251E100	ANK211E100	ANL211E100

Versione / Version	Suffisso / Suffix	Esempio / Example
Avviamento motore 2In Motor startup 2In	Sostituire la 6 ^a cifra del codice (1) con 2 Replace the 6 th digit of the code (1) with 2	ANK251C500 ⇒ AN2252B500

Inserzione Connection	DIRETTA / DIRECT			
	0...In		0...In (2In)	
Scala / Scale	0...In		0...In (2In)	
Modello / Model	NP2E	NP3E	NP2E	NP3E
Dimensioni Dimensions	76 x 58	94 x 73	76 X 58	94 x73
Portata / Range	CODICE DI ORDINAZIONE / ORDERING CODE			
1A	ANK2D1A100	ANL2D1A100	ANK2D2A100	ANL2D2A100
1,5A	ANK2D1A150	ANL2D1A150	ANK2D2A150	ANL2D2A150
2A	ANK2D1A200	ANL2D1A200	ANK2D2A200	ANL2D2A200
2,5A	ANK2D1A250	ANL2D1A250	ANK2D2A250	ANL2D2A250
3A	ANK2D1A300	ANL2D1A300	ANK2D2A300	ANL2D2A300
4A	ANK2D1A400	ANL2D1A400	ANK2D2A400	ANL2D2A400
5A	ANK2D1A500	ANL2D1A500	ANK2D2A500	ANL2D2A500
6A	ANK2D1A600	ANL2D1A600	ANK2D2A600	ANL2D2A600
10A	ANK2D1B100	ANL2D1B100	ANK2D2B100	ANL2D2B100
15A	ANK2D1B150	ANL2D1B150	ANK2D2B150	ANL2D2B150
20A	ANK2D1B200	ANL2D1B200	ANK2D2B200	ANL2D2B200
25A	ANK2D1B250	ANL2D1B250	ANK2D2B250	ANL2D2B250
30A	ANK2D1B300	ANL2D1B300	ANK2D2B300	ANL2D2B300
40A	ANK2D1B400	ANL2D1B400	ANK2D2B400	ANL2D2B400
50A	ANK2D1B500	ANL2D1B500	ANK2D2B500	ANL2D2B500
60A	ANK2D1B600	ANL2D1B600	ANK2D2B600	ANL2D2B600

VISUALIZZAZIONE

Colore scala: fondo bianco, divisioni e numerazione nere

A richiesta scale personalizzate

Opzioni: segno rosso di riferimento

Ampiezza scala: 90°

Tracciatura standard: 0...In

Tracciatura avviamento motore: 0...In...2In

Colore indice: nero

INGRESSO

Grandezza: corrente alternata monofase

Inserzione: diretta (S 250/145) o da TA esterno /5A opp. /1A (S 250/146)

Misura: vero valore efficace

Corrente nominale In

Inserzione diretta: 1...60A (vedi tabella)

Inserzione da TA esterno: 5A oppure 1A

Sovraccarico permanente: 1,2In

Sovraccarico istantaneo: 10In/5s

Frequenza nominale fn: 50Hz

Frequenza di funzionamento: 45...65Hz

Precisione (EN/IEC 60051): cl.1,5

Autoconsumo: ≤ 1,1VA

ISOLAMENTO

(EN/IEC 61010-1)

Categoria di installazione: III

Grado di inquinamento: 2

Tensione di riferimento per l'isolamento: 600V (Fase - Neutro)

Prova a tensione alternata 4kV valore efficace 50Hz/5s

Circuiti considerati: tutti i circuiti verso terra

CONDIZIONI AMBIENTALI

Temperatura di riferimento: 23°C

Campo nominale di utilizzo: 5...40°C

Campo di funzionamento: -25...50°C

Campo limite per l'immagazzinamento e trasporto: -40...80°C

Prova di vibrazioni: in accordo con EN/IEC 60051-1 paragrafo 7.6

Prova d'urto: in accordo con EN/IEC 60051-1 paragrafo 7.6

DISPLAY

Scale colour: white background, black divisions and numbering

Customized scales upon request

Option: reference red mark

Scale length: 90°

Standard scale marking: 0...In

Motor startup marking scale: 0...In...2In

Pointer colour: black

INPUT

Quantity: single-phase, alternating current

Connection: direct (S 250/145) or by external CT /5A or /1A (S 250/146)

Measure: true RMS value

Rating current In

Direct connection: 1...60A (see table)

Connection by CT external: 5A or 1A

Continuous overload: 1,2In

Instantaneous overload: 10In/5s

Rating frequency fn: 50Hz

Working frequency: 45...65Hz

Accuracy (EN/IEC 60051): class 1,5

Rated burden: ≤ 1,1VA

INSULATION

(EN/IEC 61010-1)

Installation category: III

Pollution degree: 2

Insulation voltage rating: 600V (Phase - Neutral)

A.C. voltage test 4kV r.m.s. 50Hz/5s

Considered circuits: all circuits and earth

ENVIRONMENTAL CONDITIONS

Reference temperature: 23°C

Nominal range of use: 5...40°C

Operating range: -25...50°C

Limit range for storage and transport: -40...80°C

Vibration test: according to EN/IEC 60051-1 paragraph 7.6

Shock test: according to EN/IEC 60051-1 paragraph 7.6

CUSTODIA

Fissaggio: incasso

HOUSING

Mounting: flush mounting

Modello Model	A	Conessioni / Connections	Coppia serraggio consigliata (Nm) Tightening torque advised (Nm)	
			Min.	Max.
NP2E - NP3E	1...15A	morsetti a vite M4 - faston 6,3 x 0,8mm / screw terminal M4 - faston 6,3 x 0,8mm		
	20...60A	morsetti a vite M7 / screw terminal M7	2	2,5

Materiale custodia: policarbonato autoestinguente

Grado di protezione(ENIEC 60529): IP50 frontale, IP00 morsetti

Foratura pannello: vedi tabella dimensioni

Frontale: vedi tabella dimensioni

Profondità: vedi tabella dimensioni

Peso: vedi tabella dimensioni

Housing material: self-extinguishing polycarbonate

Protection degree (ENIEC 60529): IP52 front frame, IP20 terminals

Panel cutout: see table dimensions

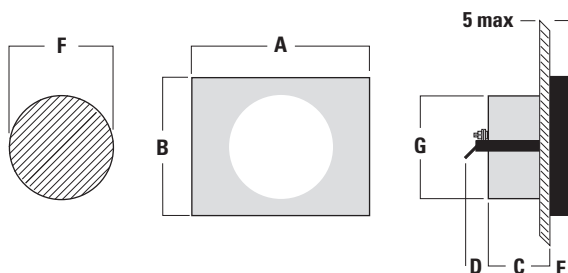
Front frame: see table dimensions

Depth: see table dimensions

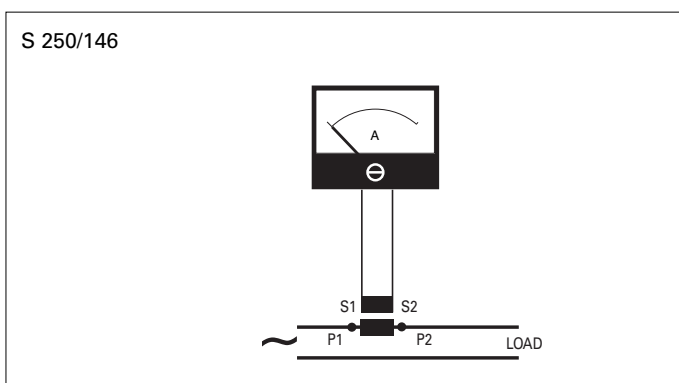
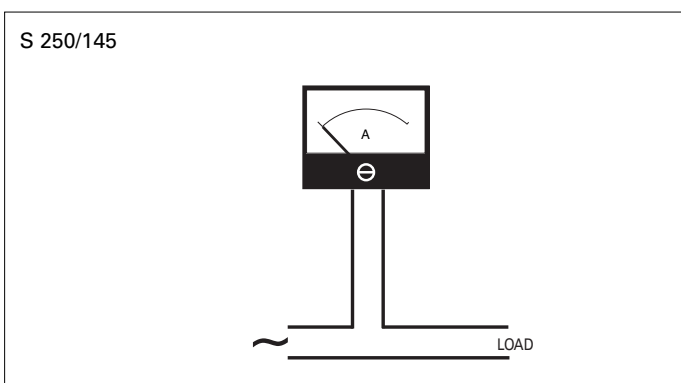
Weight: see table dimensions

DIMENSIONI DIMENSIONS

Modello / Model	A	B	C	D	E	F	G	Peso / Weight
NP2E	76	58	32,5	12	10,5	55	ø 54,5	150gr.
NP3E	94	73	32,5	12	10,5	55	ø 54,5	180gr.



SCHEMI D'INSERZIONE WIRING DIAGRAMS



La I.M.E. S.p.A. si riserva in qualsiasi momento, di modificare le caratteristiche tecniche senza darne preavviso. / I.M.E. S.p.A. reserves the right, to modify the technical characteristics without notice.

NT796 06 - 2016 2ªEd. pag. 1/4



www.imeitaly.com