



**Software di gestione  
per reti di  
monitoraggio locali  
e/o remote**

**Management software  
for remote and/or  
local monitoring  
networks**

**MIDAs EVO**

4 livelli di funzionalità che si differenziano per il numero di dispositivi in grado di monitorare (licenza fino a 5, o 20, o 100, o 1020)  
 Acquisizione dati tramite porte seriali RS485/RS232 e/o Ethernet fino a 15 canali  
 Visualizzazione istantanea in forma digitale e analogica, delle grandezze misurate dai dispositivi  
 Realizzazione di trend grafici con possibilità di esportazione  
 Impostazione soglie di allarme con invio mail  
 Archivio storico degli eventi  
 Monitoraggio del consumo energetico (uno o più dispositivi) con creazione di calendari tariffari  
 Funzione web-server per accedere da remoto, con browser internet, al sistema centrale dove risiede MIDAs Evo  
 Funzione SCADA per configurare la propria applicazione con quadri sinottici interattivi

4 functional levels which differ for the number of devices they are able to manage (licence up to 5, or 20, or 100, or 1020)  
 Data acquisition via RS485/RS232 serial port and/or Ethernet up to 15 channels  
 Analogic or digital instantaneous displays, of parameters measured by devices  
 Realization of graphic trends with the opportunity to export  
 Setting of alarm thresholds by e-mailing  
 Historical archive of events  
 Monitoring of energy consumption (one or more devices) with set creating tariff calendars  
 Web-server function to grant remote access, by browser internet, to the central system where MIDAs Evo is installed  
 SCADA function for configure its own application with interactive synoptics



CODICI DI ORDINAZIONE ORDERING CODE	N° massimo dispositivi gestiti Max. number of managed devices	LINGUA LANGUAGE
SWMF2	5	Italiano / Italian Inglese / English Francese / French Tedesco / German
SWMF3	20	
SWMF5	100	
SWMF4	1020	

## INTERFACCE E PROTOCOLLI

Interfacce fisiche di comunicazione: RS232 o RS485, Ethernet

Protocolli: ModBus RTU, ModBus RTU TCP/IP (non standard)

## PROTOCOLS AND INTERFACE

Communication physical interfaces: RS232 or RS485, Ethernet

Protocols: ModBus RTU, ModBus RTU TCP/IP (not standard)

## STRUTTURA

Gli strumenti sono suddivisi in sezioni

N° strumenti per sezione: max. 17

N° sezioni per pagina: max. 6

N° sezioni: max. 60 (per un totale apparecchi di 1020)

## STRUCTURE

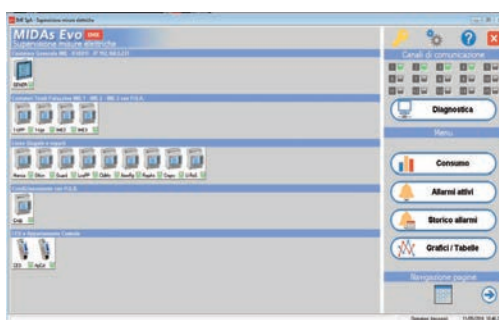
The meters are divided in sections:

N. of meters for each section: max. 17

N. of sections for each page: max. 6

N. of sections: max. 60 (for 1020 meters in all)

Esempio di pagina suddivisa in 5 sezioni



Example of page divided in 5 sections

## VISUALIZZAZIONE

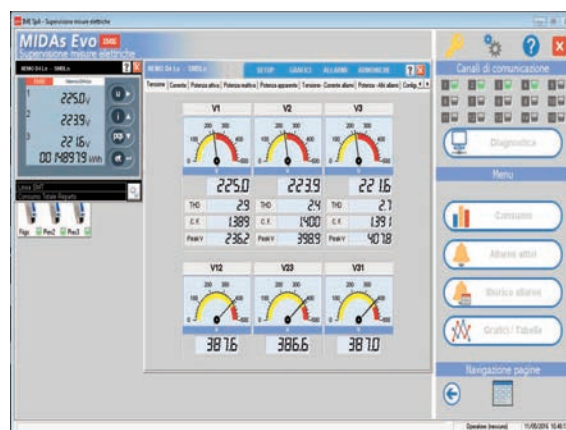
### MISURE



Correnti / Currents

## DISPLAY

### MEASUREMENTS



Tensioni / Voltage



Potenza Attiva / Active power



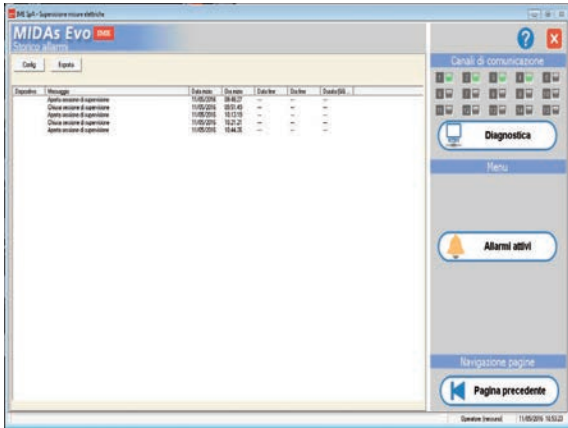
Potenza Reattiva / Reactive Power



Potenza Apparente / Apparent power



Energia / Energy



Storico Allarmi / Historic Alarms



Grafici in tempo reale / Graphics in real time

Tabella

Tables

**CONSUMI ENERGETICI**

Possibilità di gestire 4 diversi tipi di energia:

- Attiva, Reattiva Positiva (Importata)**
- Attiva, Reattiva Negativa (Esportata)**

L'analisi dei consumi può essere effettuata per un periodo di tempo determinato dall'utente o in modo continuo.

I dati possono essere esportati in file excel oppure stampati direttamente.  
 Impostazione tariffa oraria per valutare i costi nell'arco di tempo selezionato.  
 Impostazione di altri 2 calendari tariffari per confrontare simultaneamente più tariffe/contratti e valutarne i termini economici.

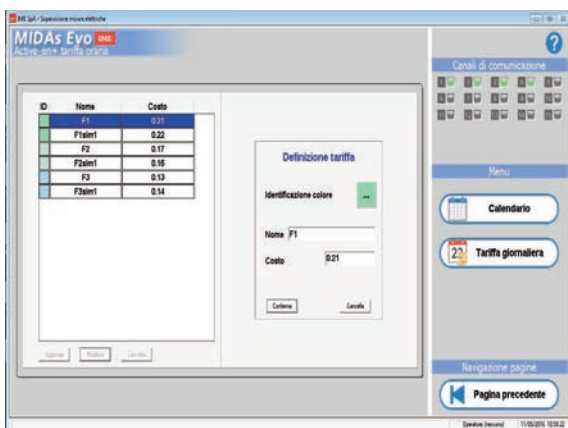
**CONSUMPTION OF ENERGY**

Possibility to manage 4 different type of energy

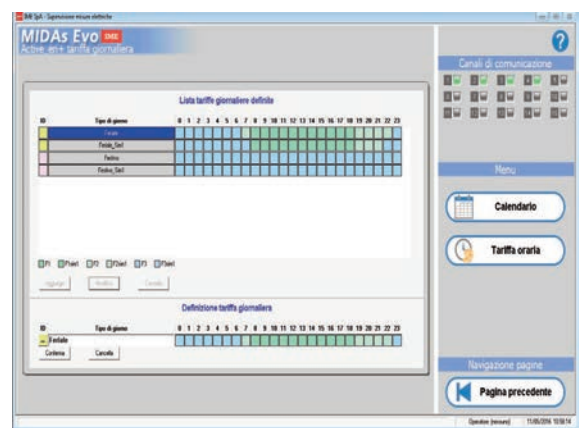
- Active, Positive Reactive (Imported)**
- Active, Negative Reactive (Esported)**

The end-user can choose whether carry out the consumption analysis for a limited period of time or in a continuative way.

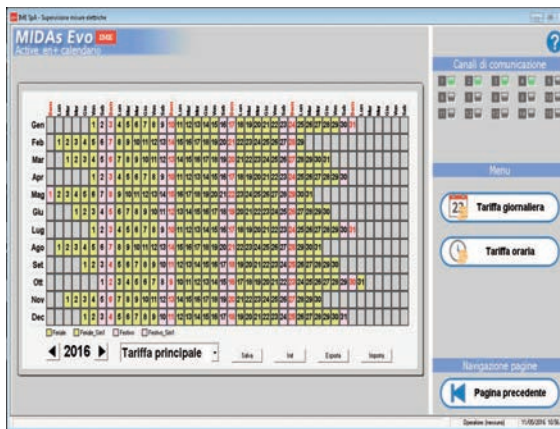
Data can be exported in Excel files or directly printed.  
 Hourly rate setting to evaluate the costs over the selected time  
 Setting of other 2 tariff calendars to simultaneously compare more tariffs/contracts and evaluate the economic terms.



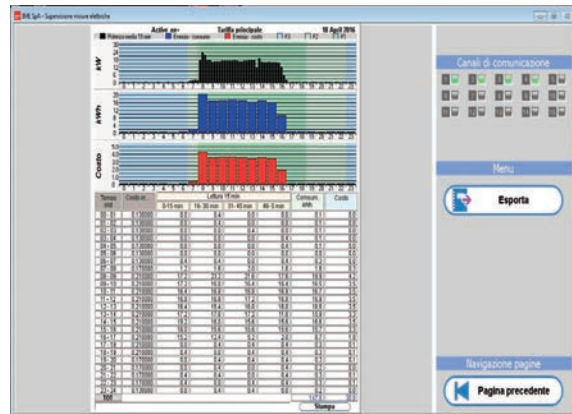
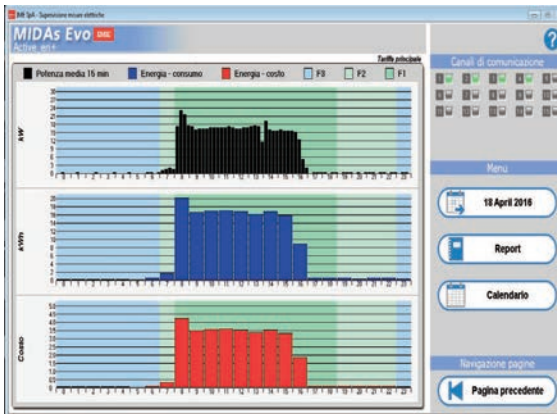
Tariffa oraria / Hour tariff



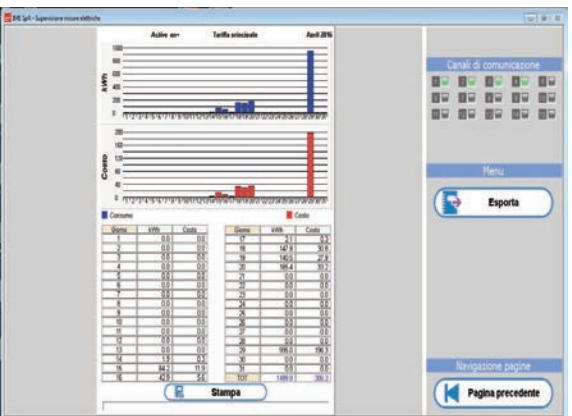
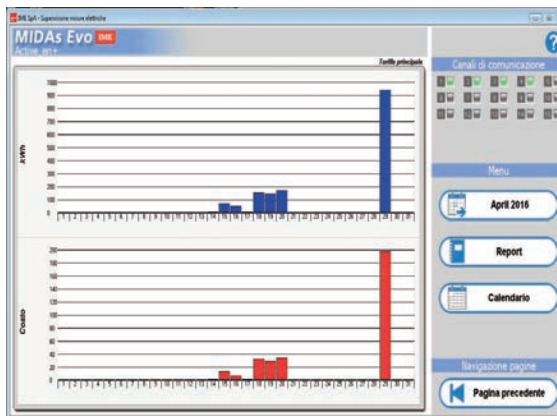
Tariffa giornaliera / Daily tariff



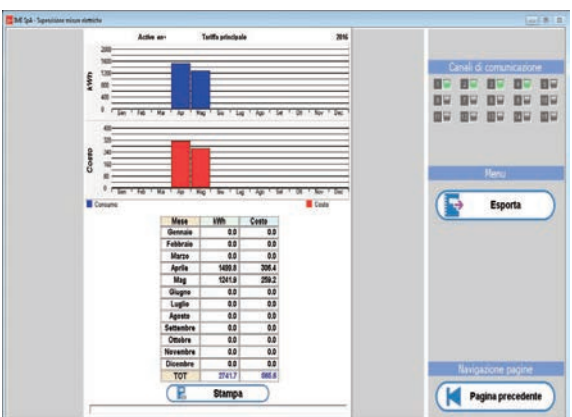
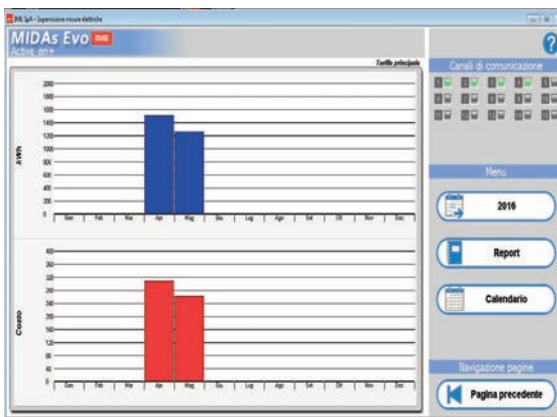
Calendario consumi energetici *Energy consumption calendar*



Consumo e report giornaliero *Daily consumption and report*



Consumo e report mensile *Monthly consumption and report*



Consumo e report annuale *Yearly consumption and report*

## CONNESSIONI

### CONNESSIONE RS485

PC (su cui risiede MIDAs Evo) connesso ai dispositivi utilizzando porta COM ed interfaccia RS232 / RS485.

⚠ Oltre i 31 dispositivi (o 1200m di linea) viene inserito un ripetitore RS485/RS485.

IFUSB01: interfaccia USB / RS485

IF2E002: interfaccia RS232 / RS485

IF2E003: ripetitore RS485 / RS485

## CONNECTIONS

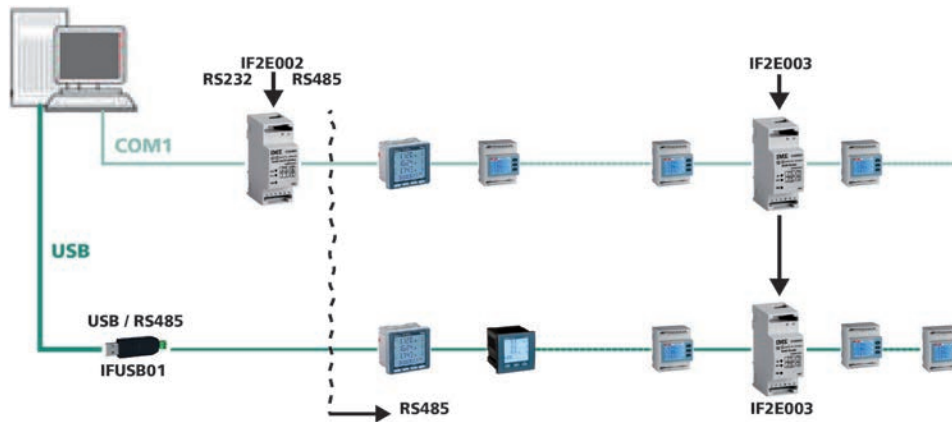
### RS 485 CONNECTION

PC (on which MIDAs Evo is loaded) connected with the devices using COM port and RS232 / RS485 interface

IFUSB01: USB / RS485 interface

IF2E002: RS232 / RS485 interface

IF2E003: RS485 / RS485 repeater



### CONNESSIONE Ethernet

PC (su cui risiede MIDAs Evo) connesso ai dispositivi utilizzando la porta Ethernet, switch di rete ed interfaccia Ethernet / RS485.

IF4E011: interfaccia Ethernet / RS485

IF2E011: interfaccia Ethernet / RS485

IF2E003: ripetitore RS485 / RS485

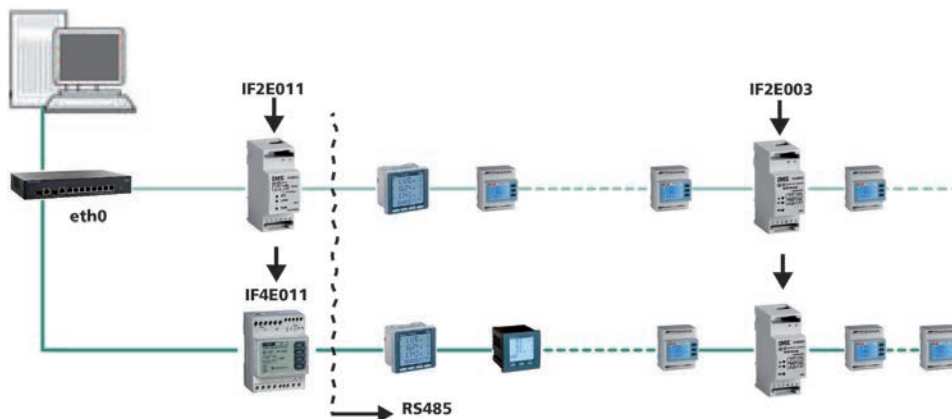
### Ethernet CONNECTION

PC (on which MIDAs Evo is loaded) connected with the devices using Ethernet port, network switch and Ethernet / RS485 interface

IF4E011: Ethernet / RS485 interface

IF2E011: Ethernet / RS485 interface

IF2E003: RS485 / RS485 repeater



### CONNESSIONE MISTA Ethernet / RS485

PC (su cui risiede MIDAs Evo) connesso ai dispositivi utilizzando sia la porta Ethernet (attraverso lo switch di rete) e un'interfaccia Ethernet / RS485, sia la porta COM ed interfaccia RS232 / RS485.

IF4E011: interfaccia RS485 / Ethernet

IF2E002: interfaccia RS232 / RS485

IF2E003: ripetitore RS485 / RS485

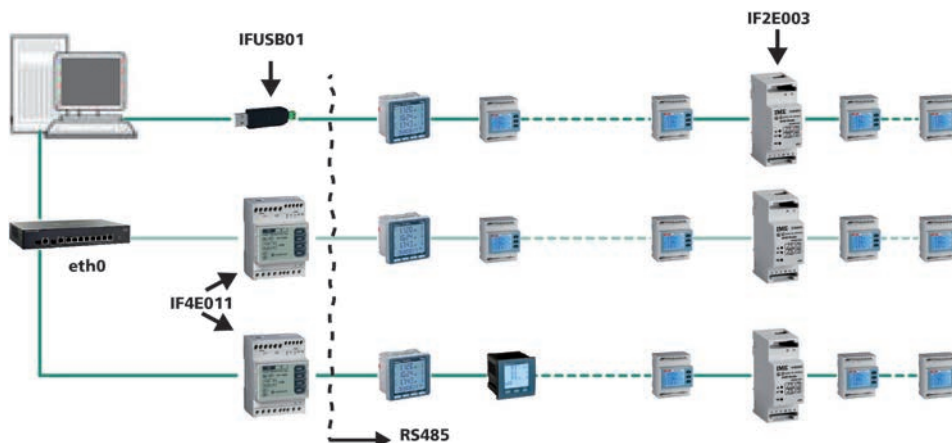
### Ethernet / RS485 MIXED CONNECTION

PC (on which MIDAs Evo is loaded) connected with the devices using both Ethernet port (through the network switch) and a Ethernet / RS485 interface, and COM port and RS232/RS485 interface.

IF4E011: RS485 / Ethernet interface

IF2E002: RS485 / RS232 interface

IF2E003: RS485 / RS485 repeater



### CONNESSIONE Web server

PC (su cui risiede MIDAs Evo) inserito in rete LAN che può essere visto attraverso Internet (rete WAN)

**IF4E011:** interfaccia Ethernet / RS485/

**IF2E002:** interfaccia RS232 / RS485

**IF2E003:** ripetitore RS485 / RS485

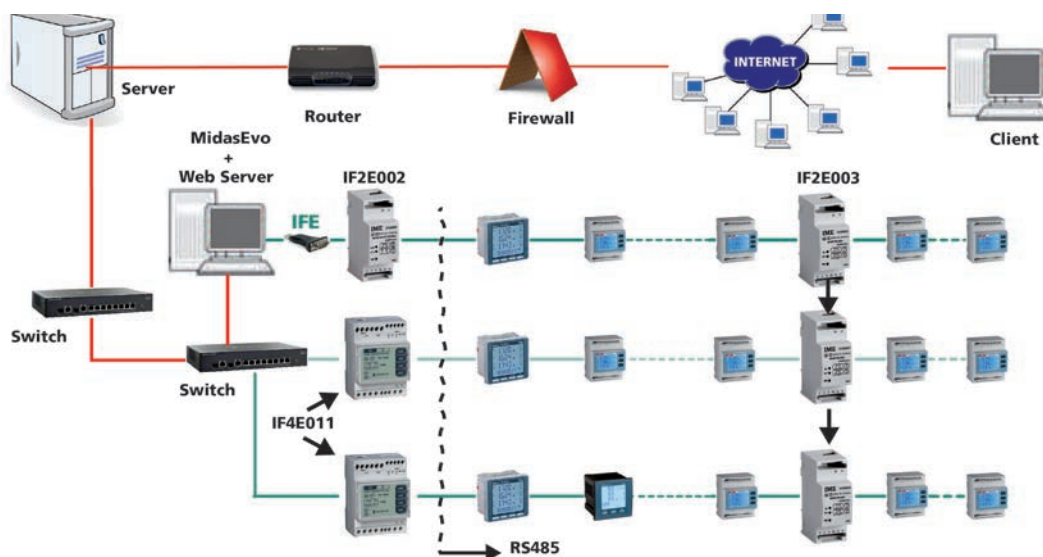
### Web server CONNECTION

PC (on which MIDAs Evo is loaded) mounted in the LAN network which can be seen through Internet (WAN network)

**IF4E011:** Ethernet / RS485 interface

**IF2E002:** RS232 / RS485 interface

**IF2E003:** RS485 / RS485 repeater



### CONNESSIONE INTERNET

PC (su cui risiede MIDAs Evo) inserito in una rete differente da quella dove sono gli apparecchi. Interrogazione attraverso router di rete dove è presente l'impianto da monitorare

**IF2E011:** interfaccia Ethernet / RS485

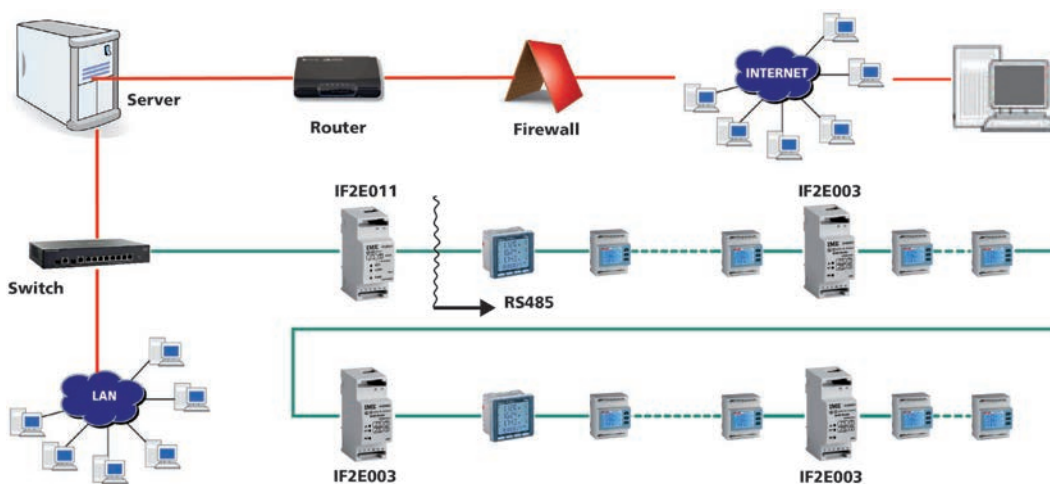
**IF2E003:** ripetitore RS485 / RS485

### INTERNET CONNECTION

PC (on which MIDAs Evo is loaded) mounted in a network different from the one where the devices are. Query through network router where the system under monitoring is.

**IF2E011:** Ethernet / RS485 interface

**IF2E003:** RS485 / RS485 repeater



### CONNESSIONE MISTA RETE LAN E RETE WAN

PC (su cui risiede MIDAs Evo) inserito nella rete LAN che può interrogare altri apparecchi attraverso la rete WAN

**IF4E011:** interfaccia Ethernet / RS485

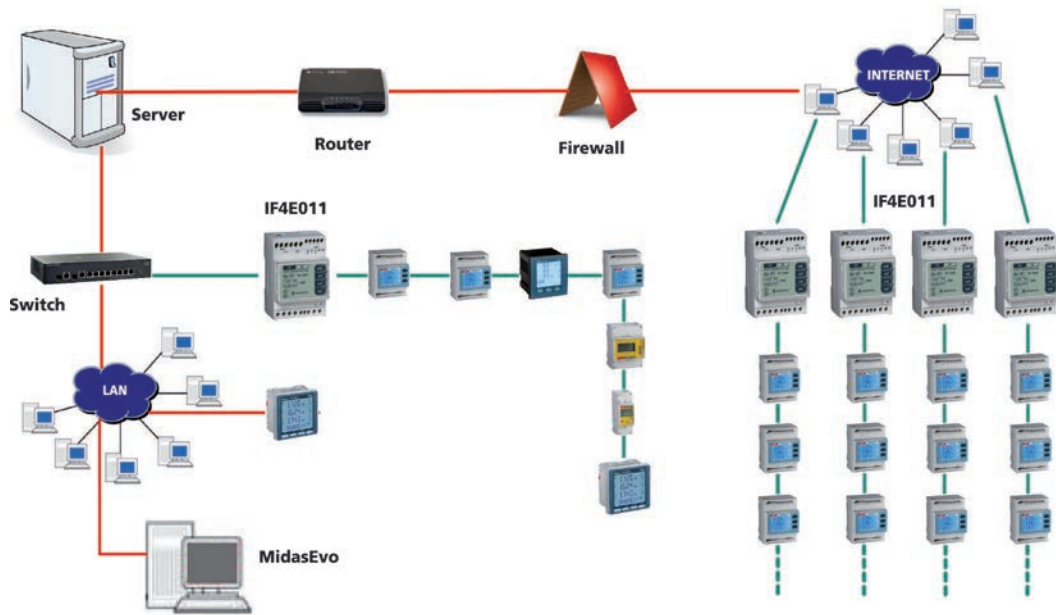
**IF2E003:** ripetitore RS485 / RS485

### AN NETWORK AND WAN NETWORK MIXED CONNECTION

PC (on which MIDAs Evo is loaded) mounted in the LAN network which can query other devices through the WAN network.

**IF4E011:** Ethernet / RS485 interface

**IF2E003:** RS485 / RS485 repeater



### REQUISITI MINIMI DI SISTEMA

**PC:** sempre acceso e connesso in rete

**Sistema operativo:** Windows XP SP3, Windows 7 SP1, Windows 8 o 8.1 e Windows 10 (32 e 64 bit)

**Processore:** Dualcore x86/64 da 2,4GHz

**RAM:** 3GB

**HDD:** 120GB

**Scheda di rete:** 10/100Mbit

**Porte:** RS232 o Ethernet, USB (per inserimento della chiave di attivazione/licenza)

**Scheda video:** DirectX 9 (risoluzione 1024x768)

### MINIMUM SYSTEM REQUIREMENTS

**PC:** always turned on and network-connected

**Operating system:** Windows XP SP3, Windows 7 SP1, Windows 8 or 8.1 and Windows 10 (32 and 64 bit)

**Processor:** Dualcore x86/64 of 2,4GHz

**RAM:** 3GB

**HDD:** 120GB

**Network card:** 10/100Mbit

**Ports:** RS232 or Ethernet, USB for the activation key must be inserted/license

**Graphics card:** DirectX 9 (resolution 1024x768)