

Current transformers for low voltage network - MEASURE

Selection table

PASSING CABLE/BUSBARS PRIMARY TRANSFORMERS																											
Model	TAIBB	TA221	TA327	TA426	TA432	TA540	TAC80	TAC110	TAS64	TAS81																	
Cat. Nos.	TABB...	TA221...	TA327...	TA426...	TA432...	TA540...	TA80...	TA11...	TASI...	TASN...																	
Technical notes	NT516	NT811	NT812	NT813	NT814	NT815	NT712	NT713	NT569	NT573																	
Width (mm)	44	49.5	56	60	70	70	125	165	90	100																	
Height (mm)	65	80	80	85	95	95	132	170	130	145																	
Cable (mm)	Ø21	Ø21	Ø27	Ø26	Ø32	Ø40	Ø80	Ø110																			
Window (mm)	16x12.5	20.5x10.5	25.5x15.5 32.5x10.5	32.5x15.5 40.5x12.5	25.5x25.5 32.5x20.5 40.5x10.5	40.5x20.5 50.5x12.5			51x31 64x11	64x31 81x11																	
Primary current	VA			VA			VA			VA			VA			VA			VA			VA			VA		
	cl 0.5	cl. 1	cl.3	cl 0.5	cl. 1	cl.3	cl 0.5	cl. 1	cl.3	cl 0.5	cl. 1	cl 0.5	cl. 1	cl.3	cl 0.5	cl. 1	cl 0.5	cl. 1	cl 0.5	cl. 1	cl 0.5	cl. 1	cl 0.5	cl. 1	cl 0.5	cl. 1	
40A			1						1.5																		
50A		1	1.5			2.5			2.5																		
60A		1	2		1.5	3			3																		
70A		1.5	2.5		1.5	4		1.5	3																		
75A		1.5	2.5		2	4		1.5	3.5																		
80A		1.5	2.5		3	4	1.5	2.5																			
100A	1.5	2.5	2.5	3	4		2	3				2	5														
120A	2	3.5	2.5	3	4		2	3.5				2	5														
125A	2	3.5	2.5	3	4		2	3.5				2	6														
150A	3	4		4	6		3	4		1.5	3	1	3														
160A	3	4		4	6		3	5		1.5	3	1.5	3														
200A	4	5.5		6	8		4	7		2.5	4	3	5			1.5	3										
250A	5	6		8	10		6	8		3	4	3	5			2	4						2.5				
300A	6	7.5		8	10		8	10		4	6	5	8		2	4	2.5	5					3				
400A							10	12		6	8	8	10		4	6	3	5	3	5			4		2		
500A							12	15		6	8	10	12		4	6	3	5	3	5	2	4	2	4	2	4	
600A							15	20		6	8	12	15		6	8	4	6	4	6	4	6	3	5			
700A										8	10	10	12		8	10						6	8	4	6		
750A										8	10	10	12		8	10						6	8	4	6		
800A										10	12	10	12		8	12	4	6	4	6	6	8	4	6			
1000A												12	15		10	12	6	8	8	10	8	10	6	8			
1200A															12	15			8	10	10	12	8	10			
1250A																						10	12	8	10		
1500A																						10	12	10	12		
1600A																			10	12	10	12	10	12			
2000A																								10	12		
2500A																								10	12		
3000A																											
3200A																											
4000A																											
5000A																											
6000A																											
8000A																											

Current transformers - MEASURE

Cable/passing bar single-phase current transformer



TAIBB

TA221

Cat. Nos.

TAIBB

Passing cable window/bar Ø 21mm - 16,5x12,5mm

Isr 5A	Isr 1A	Primary current (A)	Accuracy class VA		
			cl. 0.5	cl. 1	cl.3
TABB50B400	TABB10B400	40	-	-	1
TABB50B500	TABB10B500	50	-	1	1.5
TABB50B600	TABB10B600	60	-	1	2
TABB50B700	TABB10B700	70	-	1.5	2.5
TABB50B750	TABB10B750	75	-	1.5	2.5
TABB50B800	TABB10B800	80	-	1.5	2.5
TABB50C100	TABB10C100	100	1.5	2.5	3.5
TABB50C120	TABB10C120	120	2	3.5	
TABB50C125	TABB10C125	125	2	3.5	
TABB50C150	TABB10C150	150	3	4	
TABB50C160	TABB10C160	160	3	4	
TABB50C200	TABB10C200	200	4	5.5	
TABB50C250		250	5	6	
TABB50C300		300	6	7.5	

Cat. Nos.

TA221

Passing cable window/bar Ø 21mm - 20,5x10,5mm

Isr 5A	Isr 1A	Primary current (A)	Accuracy class VA		
			cl. 0.5	cl. 1	cl.3
TA22150B500	TA22110B500	50	-	-	2.5
TA22150B600	TA22110B600	60	-	1.5	3
TA22150B700	TA22110B700	70	-	1.5	4
TA22150B750	TA22110B750	75	-	2	4
TA22150B800	TA22110B800	80	-	3	4
TA22150C100	TA22110C100	100	2.5	4	-
TA22150C120	TA22110C120	120	2.5	4	-
TA22150C125	TA22110C125	125	2.5	4	-
TA22150C150	TA22110C150	150	4	6	-
TA22150C160	TA22110C160	160	4	6	-
TA22150C200	TA22110C200	200	6	8	-
TA22150C250	TA22110C250	250	8	10	-
TA22150C300		300	8	10	-

Cat. Nos.

Accessories

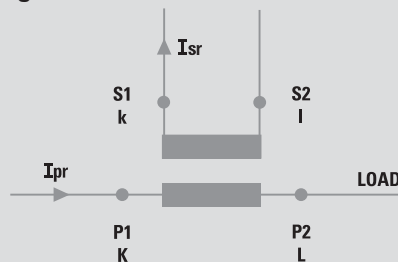
Description

ATACOP12	Accessory sealable terminal cover for TAIBB
ATACOP13	Accessory sealable terminal cover for TA221

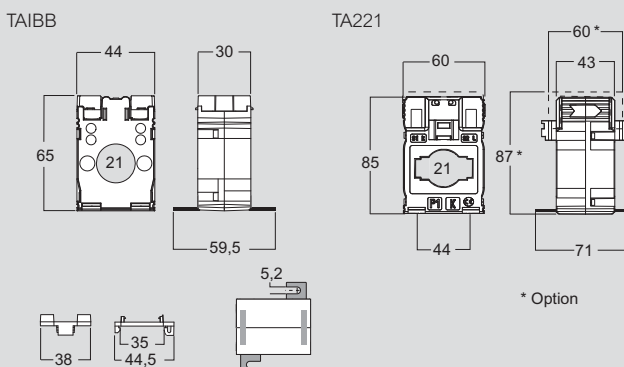
Technical features

MODEL	TAIBB	TA221
TECHNICAL NOTES	NT516	NT811
SPECIFICATIONS		
Reference specification	EN/IEC 61869-1, 61869-2	
Rated primary current I _{pr} :	40...300A (with secondary 5A)	50...300A (with secondary 5A)
	40...200A (with secondary 1A)	50...250A (with secondary 1A)
Rated frequency:	50Hz	
Working frequency:	47...63Hz	
Rated continuous thermal current I _{cth} :	100% I _{pr}	
Rated short-time thermal current I _{th} :	< 60I _{pr}	
Rated dynamic current I _{dyn} :	2,5I _{th}	
Instrument security factor (FS):	≤ 5	
Rated secondary current I _{sr} :	5 - 1A (I _{sr} 1A not available with I _{pr} 250 and 300A)	
Max. power dissipation	≤ 3W	≤ 4W at I _{cth}
Allowed max cable or busbar temperature:	125°C	
INSULATION REQUIREMENTS		
Type	Dry transformer, air insulation	
Highest voltage for equipment U _m :	0.72kV r.m.s.	
Rated insulation level:	3kV r.m.s. 50Hz/1min	
Class of insulation (EN/IEC 61869-1, 61869-2):	B	
ENVIRONMENTAL CONDITIONS		
Nominal temperature range:	-25...50°C	
Limit temperature range for storage:	-40...85°C	
Relative humidity:	≤ 85%	
Suitable for tropical climates	yes	
CONNECTION		
Primary winding:	passing cable	
Secondary winding	screw terminals, max 2 separated wires 2,5mm ²	4 screw terminals (max. cable section 6mm ²) + 2 fast-ons (4,8x0,8mm)
MECHANICAL FEATURES		
Housing material:	self extinguishing polycarbonate	
Protection degree (EN/IEC 60529):	IP40 housing - IP20 terminals	
Mounting:	snap-on 35mm rail, screw type for wall mounting	
Weight:	180 gr	320 gr

Wiring diagrams



Dimensions



Current transformers - MEASURE

Cable/passing bar single-phase current transformer



TA327



TA426

Cat. Nos.

TA327

Passing cable window/bar Ø 27mm - 25.5x15.5mm - 32.5x10.5mm

Isr 5A	Isr 1A	Primary current (A)	Accuracy class VA		
			cl. 0.5	cl. 1	cl.3
TA32750B500	TA32710B500	50	-	-	1.5
TA32750B600	TA32710B600	60	-	-	2.5
TA32750B700	TA32710B700	70	-	1.5	3
TA32750B750	TA32710B750	75	-	1.5	3
TA32750B800	TA32710B800	80	-	2.5	3.5
TA32750C100	TA32710C100	100	2	3	-
TA32750C120	TA32710C120	120	2	3.5	-
TA32750C125	TA32710C125	125	2	3.5	-
TA32750C150	TA32710C150	150	3	4	-
TA32750C160	TA32710C160	160	3	5	-
TA32750C200	TA32710C200	200	4	7	-
TA32750C250	TA32710C250	250	6	8	-
TA32750C300	TA32710C300	300	8	10	-
TA32750C400	TA32710C400	400	10	12	-
TA32750C500	TA32710C500	500	12	15	-
TA32750C600	TA32710C600	600	15	20	-

Cat. Nos.

TA426

Passing cable window/bar Ø 26mm - 32.5x15.5mm - 40.5x12.5mm

Isr 5A	Isr 1A	Primary current (A)	Accuracy class VA		
			cl. 0.5	cl. 1	cl. 1
TA42650C150	TA42610C150	150A	1.5	3	3
TA42650C160	TA42610C160	160A	1.5	3	3
TA42650C200	TA42610C200	200A	2.5	4	4
TA42650C250	TA42610C250	250A	3	4	4
TA42650C300	TA42610C300	300A	4	6	6
TA42650C400	TA42610C400	400A	6	8	8
TA42650C500	TA42610C500	500A	6	8	8
TA42650C600	TA42610C600	600A	6	8	8
TA42650C700	TA42610C700	700A	8	10	10
TA42650C750	TA42610C750	750A	8	10	10
TA42650C800	TA42610C800	800A	10	12	12

Cat. Nos.

Accessories

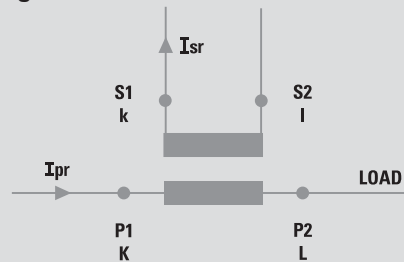
ATACOP13

Description
Accessory sealable terminal cover

Technical features

MODEL	TA327	TA426
TECHNICAL NOTES	NT812	NT813
SPECIFICATIONS		
Reference specification	EN/IEC 61869-1, 61869-2	
Rated primary current I _{pr} :	50...600A	150...800A
Rated frequency:	50Hz	
Working frequency:	47...63Hz	
Rated continuous thermal current I _{cth} :	100% I _{pr}	
Rated short-time thermal current I _{th} :	< 60I _{pr}	
Rated dynamic current I _{dyn} :	2,5I _{th}	
Instrument security factor (FS):	≤ 5	
Rated secondary current I _{sr} :	1-5A	
Max. power dissipation	≤ 7W at I _{cth}	≤ 11.5W at I _{cth}
Allowed max cable or busbar temperature:	125°C	
INSULATION REQUIREMENTS		
Type	Dry transformer, air insulation	
Highest voltage for equipment U _m :	0.72kV r.m.s.	
Rated insulation level:	3kV r.m.s. 50Hz/1min	
Class of insulation (EN/IEC 61869-1, 61869-2):	B	
ENVIRONMENTAL CONDITIONS		
Nominal temperature range:	-25...50°C	
Limit temperature range for storage:	-40...85°C	
Relative humidity:	≤ 85%	
Suitable for tropical climates	yes	
CONNECTION		
Primary winding:	passing cable/bus bar primary	
Secondary winding	4 screw terminals (max. cable section 6mm ²) + 2 fast-ons (4,8x0,8mm)	
MECHANICAL FEATURES		
Housing material:	self extinguishing polycarbonate	
Protection degree (EN/IEC 60529):	IP40 housing - IP20 terminals	
Mounting:	snap-on 35mm rail, screw type for wall mounting	
Weight:	260 gr	300 gr

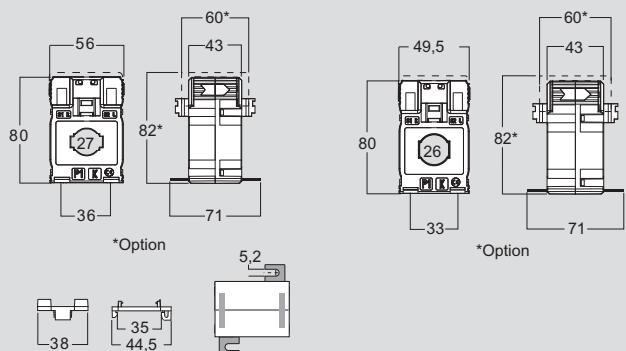
Wiring diagrams



Dimensions

TA327

TA426



Current transformers - MEASURE

Cable/passing bar single-phase current transformer



TA432



TA540

Cat. Nos.

TA432

Passing cable window/bar Ø 32mm - 25,5x25,5mm - 32,5x20,5mm - 40,5x10,5mm

Isr 5A	Isr 1A	Primary current (A)	Accuracy class VA		
			cl. 0.5	cl. 1	cl. 3
TA43250C100	TA43210C100	100A	-	2	5
TA43250C120	TA43210C120	120A	-	2	5
TA43250C125	TA43210C125	125A	-	2	6
TA43250C150	TA43210C150	150A	1	3	-
TA43250C160	TA43210C160	160A	1.5	3	-
TA43250C200	TA43210C200	200A	3	5	-
TA43250C250	TA43210C250	250A	3	5	-
TA43250C300	TA43210C300	300A	5	8	-
TA43250C400	TA43210C400	400A	8	10	-
TA43250C500	TA43210C500	500A	10	12	-
TA43250C600	TA43210C600	600A	12	15	-
TA43250C700	TA43210C700	700A	10	12	-
TA43250C750	TA43210C750	750A	10	12	-
TA43250C800	TA43210C800	800A	10	12	-
TA43250D100	TA43210D100	1000A	12	15	-

Cat. Nos.

TA540

Passing cable window/bar Ø 40mm - 40,5x20,5mm - 50,5x12,5mm - 40,5x10,5mm

Isr 5A	Isr 1A	Primary current (A)	Accuracy class VA	
			cl. 0.5	cl. 1
TA54050C300	TA54010C300	300A	2	4
TA54050C400	TA54010C400	400A	4	6
TA54050C500	TA54010C500	500A	4	6
TA54050C600	TA54010C600	600A	6	8
TA54050C700	TA54010C700	700A	8	10
TA54050C750	TA54010C750	750A	8	10
TA54050C800	TA54010C800	800A	8	12
TA54050D100	TA54010D100	1000A	10	12
TA54050D120	TA54010D120	1200A	12	15

Cat. Nos.

Accessories

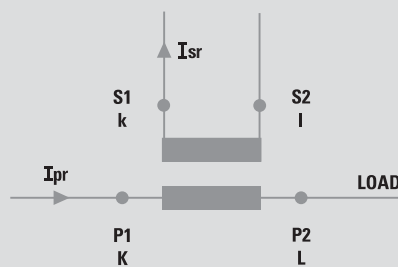
Description
ATACOP13

Accessory sealable terminal cover

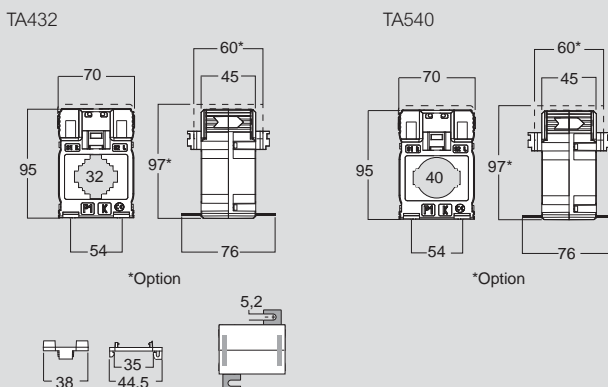
Technical features

MODEL	TA432	TA540
TECHNICAL NOTES	NT814	NT815
SPECIFICATIONS		
Reference specification	EN/IEC 61869-1, 61869-2	
Rated primary current I _{pr} :	100...1000A	300...1200A
Rated frequency:	50Hz	
Working frequency:	47...63Hz	
Rated continuous thermal current I _{cth} :	100% I _{pr}	
Rated short-time thermal current I _{th} :	< 60I _{pr}	
Rated dynamic current I _{dyn} :	2,5I _{th}	
Instrument security factor (FS):	≤ 5	
Rated secondary current I _{sr} :	5 - 1A	
Max. power dissipation	≤ 9W at I _{cth}	≤ 10.5W at I _{cth}
Allowed max cable or busbar temperature:	125°C	
INSULATION REQUIREMENTS		
Type	Dry transformer, air insulation	
Highest voltage for equipment U _m :	0.72kV r.m.s.	
Rated insulation level:	3kV r.m.s. 50Hz/1min	
Class of insulation (EN/IEC 61869-1, 61869-2):	B	
ENVIRONMENTAL CONDITIONS		
Nominal temperature range:	-25...50°C	
Limit temperature range for storage:	-40...85°C	
Relative humidity:	≤ 85%	
Suitable for tropical climates	yes	
CONNECTION		
Primary winding:	Passing cable/bus bar primary	
Secondary winding	4 screw terminals (max. cable section 6mm ²) + 2 fast-ons (4,8x0,8mm)	
MECHANICAL FEATURES		
Housing material:	self extinguishing polycarbonate	
Protection degree (EN/IEC 60529):	IP40 housing - IP20 terminals	
Mounting:	snap-on 35mm rail, screw type for wall mounting	
Weight:	420 gr	320 gr

Wiring diagrams



Dimensions



Current transformers - MEASURE

Cable/passing bar single-phase current transformer



TAC80



TAC110

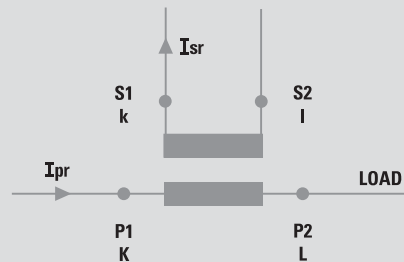
Cat. Nos.		TAC80	
Passing cable window/bar Ø 80mm			
Isr 5A	Primary current (A)	Accuracy class VA	
		cl. 0.5	cl. 1
TA0850C200	200A	1.5	3
TA0850C250	250A	2	4
TA0850C300	300A	2.5	5
TA0850C400	400A	3	5
TA0850C500	500A	3	5
TA0850C600	600A	4	6
TA0850C800	800A	4	6
TA0850D100	1000A	6	8

Cat. Nos.		TAC110	
Passing cable window/bar Ø 110mm			
Isr 5A	Primary current (A)	Accuracy class VA	
		cl. 0.5	cl. 1
TA1150C400	400A	3	5
TA1150C500	500A	3	5
TA1150C600	600A	4	6
TA1150C800	800A	4	6
TA1150D100	1000A	8	10
TA1150D120	1200A	8	10
TA1150D150	1500A	10	12

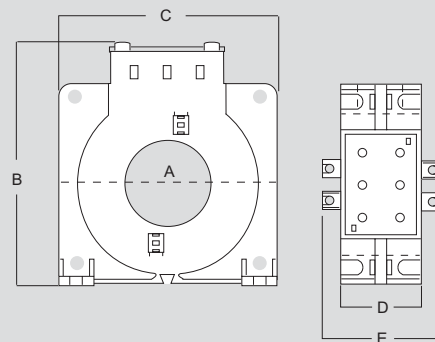
Technical features

MODEL	TAC80	TAC110
TECHNICAL NOTES	NT712	NT713
SPECIFICATIONS		
Reference specification	EN/IEC 61869-1, 61869-2	
Rated primary current Ipr:	200...1000A	400...1500A
Rated frequency:	50Hz	
Working frequency:	47...63Hz	
Rated continuous thermal current Icth:	100% Ipr	
Rated short-time thermal current Ith:	< 60Ipr	
Rated dynamic current Idyn :	2,5Ith	
Instrument security factor (FS):	≤ 5	
Rated secondary current Isr :	5A	
Max. power dissipation	≤ 7.5W at Icth	≤ 10.5W at Icth
Allowed max cable or busbar temperature:	125°C	
INSULATION REQUIREMENTS		
Type	Dry transformer, air insulation	
Highest voltage for equipment Um:	0.72kV r.m.s.	
Rated insulation level:	3kV r.m.s. 50Hz/1min	
Class of insulation (EN/IEC 61869-1, 61869-2):	B	
ENVIRONMENTAL CONDITIONS		
Nominal temperature range:	-25...50°C	
Limit temperature range for storage:	-40...85°C	
Relative humidity:	≤ 85%	
Suitable for tropical climates	yes	
CONNECTION		
Primary winding:	Passing cable	
Secondary winding	2 screw terminals (2x2.5mm ²)	
MECHANICAL FEATURES		
Housing material:	self extinguishing polycarbonate	
Protection degree (EN/IEC 60529):	IP40 housing - IP20 terminals	
Mounting:	screw type for wall mounting	
Weight:	500 gr	650 gr

Wiring diagrams



Dimensions



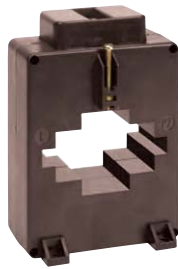
Dim. (mm)	A	B	C	D	E
TAC80	80	132	125	36	56
TAC110	110	170	165	36	56

Current transformers - MEASURE

Cable/passing bar single-phase current transformer



TAS64



TAS81

Cat. Nos.

TAS64

Passing cable window/bar 51x31mm - 64x11mm

Isr 5A	Isr 1A	Primary current (A)	Accuracy class VA	
			cl. 0.5	cl. 1
TASI50C250	TASI10C250	250A	-	2.5
TASI50C300	TASI10C300	300A	-	3
TASI50C400	TASI10C400	400A	-	4
TASI50C500	TASI10C500	500A	2	4
TASI50C600	TASI10C600	600A	4	6
TASI50C700	TASI10C700	700A	6	8
TASI50C750	TASI10C750	750A	6	8
TASI50C800	TASI10C800	800A	6	8
TASI50D100	TASI10D100	1000A	5	10
TASI50D120	TASI10D120	1200A	10	12
TASI50D125	TASI10D125	1250A	10	12
TASI50D150	TASI10D150	1500A	10	12
TASI50D160	TASI10D160	1600A	10	12

Cat. Nos.

TAS81

Passing cable window/bar 64x31mm - 81x11mm

Isr 5A	Isr 1A	Primary current (A)	Accuracy class VA	
			cl. 0.5	cl. 1
TASN50C400	TASN10C400	400A	-	2
TASN50C500	TASN10C500	500A	2	4
TASN50C600	TASN10C600	600A	3	5
TASN50C700	TASN10C700	700A	4	6
TASN50C750	TASN10C750	750A	4	6
TASN50C800	TASN10C800	800A	4	6
TASN50D100	TASN10D100	1000A	6	8
TASN50D120	TASN10D120	1200A	8	10
TASN50D125	TASN10D125	1250A	8	10
TASN50D150	TASN10D150	1500A	10	12
TASN50D160	TASN10D160	1600A	10	12
TASN50D200	TASN10D200	2000A	10	12
TASN50D250	TASN10D250	2500A	10	12

Cat. Nos.

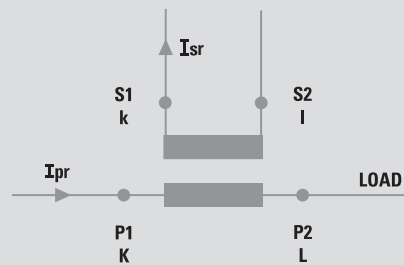
Accessories

Description
ATACOP03 Accessory sealable terminal cover

Technical features

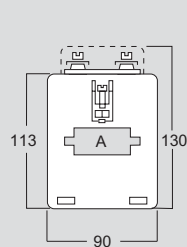
MODEL	TAS64	TAS81
TECHNICAL NOTES	NT569	NT573
SPECIFICATIONS		
Reference specification	EN/IEC 61869-1, 61869-2	
Rated primary current I _{pr} :	250...1600A	400...2500A
Rated frequency:	50Hz	
Working frequency:	47...63Hz	
Rated continuous thermal current I _{cth} :	100% I _{pr}	
Rated short-time thermal current I _{th} :	< 60I _{pr}	
Rated dynamic current I _{dyn} :	2,5I _{th}	
Instrument security factor (FS):	≤ 5	
Rated secondary current I _{sr} :	5 - 1A	
Max. power dissipation	≤ 16W at I _{cth}	≤ 14.5W at I _{cth}
Allowed max cable or busbar temperature:	125°C	
INSULATION REQUIREMENTS		
Type	Dry transformer, air insulation	
Highest voltage for equipment U _m :	0.72kV r.m.s.	
Rated insulation level:	3kV r.m.s. 50Hz/1min	
Class of insulation (EN/IEC 61869-1, 61869-2):	B	
ENVIRONMENTAL CONDITIONS		
Nominal temperature range:	-25...50°C	
Limit temperature range for storage:	-40...85°C	
Relative humidity:	≤ 85%	
Suitable for tropical climates	yes	
CONNECTION		
Primary winding:	Passing bus bar	
Secondary winding	tightening by nut M4	
MECHANICAL FEATURES		
Housing material:	self extinguishing polycarbonate	
Protection degree (EN/IEC 60529):	P40 housing - IP00 terminals (IP20 with sealable terminal cover)	
Weight:	500 gr	470 gr

Wiring diagrams

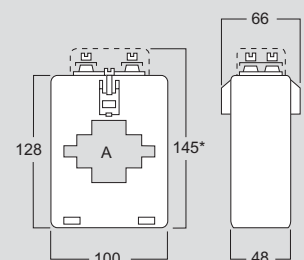


Dimensions

TAS64



TAS81



Current transformers - MEASURE

Cable/passing bar single-phase current transformers



TAS65

TAS84

Cat. Nos.			
Bars in VERTICAL		Bars in HORIZONTAL	
Isr 5A	Isr 1A	Isr 5A	Isr 1A
TASL50C250	TASL10C250	TASL50C2503	TASL10C2503
TASL50C300	TASL10C300	TASL50C3003	TASL10C3003
TASL50C400	TASL10C400	TASL50C4003	TASL10C4003
TASL50C500	TASL10C500	TASL50C5003	TASL10C5003
TASL50C600	TASL10C600	TASL50C6003	TASL10C6003
TASL50C700	TASL10C700	TASL50C7003	TASL10C7003
TASL50C750	TASL10C750	TASL50C7503	TASL10C7503
TASL50C800	TASL10C800	TASL50C8003	TASL10C8003
TASL50D100	TASL10D100	TASL50D1003	TASL10D1003
TASL50D120	TASL10D120	TASL50D1203	TASL10D1203
TASL50D125	TASL10D125	TASL50D1253	TASL10D1253
TASL50D150	TASL10D150	TASL50D1503	TASL10D1503
TASL50D160	TASL10D160	TASL50D1603	TASL10D1603
TASL50D200	TASL10D200	TASL50D2003	TASL10D2003

TAS65
 Passing cable window/bar
 32x65mm and 65x32mm -
 long side terminals

Primary current (A)	Accuracy class VA	
	cl. 0.5	cl. 1
250A	1	4
300A	1.5	6
400A	4	8
500A	8	10
600A	8	12
700A	10	12
750A	10	15
800A	12	15
1000A	15	20
1200A	15	20
1250A	15	20
1500A	20	25
1600A	20	25
2000A	20	25

Cat. Nos.			
Bars in VERTICAL		Bars in HORIZONTAL	
Isr 5A	Isr 1A	Isr 5A	Isr 1A
TASO50C300	TASO10C300	TASO50C3003	TASO10C3003
TASO50C400	TASO10C400	TASO50C4003	TASO10C4003
TASO50C500	TASO10C500	TASO50C5003	TASO10C5003
TASO50C600	TASO10C600	TASO50C6003	TASO10C6003
TASO50C700	TASO10C700	TASO50C7003	TASO10C7003
TASO50C750	TASO10C750	TASO50C7503	TASO10C7503
TASO50C800	TASO10C800	TASO50C8003	TASO10C8003
TASO50D100	TASO10D100	TASO50D1003	TASO10D1003
TASO50D120	TASO10D120	TASO50D1203	TASO10D1203
TASO50D125	TASO10D125	TASO50D1253	TASO10D1253
TASO50D150	TASO10D150	TASO50D1503	TASO10D1503
TASO50D160	TASO10D160	TASO50D1603	TASO10D1603
TASO50D200	TASO10D200	TASO50D2003	TASO10D2003
TASO50D250	TASO10D250	TASO50D2503	TASO10D2503

TAS84
 Passing cable window/bar
 34x84mm and 84x34mm -
 long side terminals

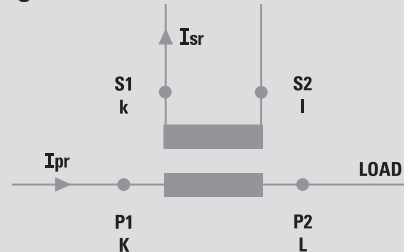
Primary current (A)	Accuracy class VA	
	cl. 0.5	cl. 1
300A	-	2
400A	3	5
500A	5	7
600A	6	10
700A	6	10
750A	8	12
800A	8	12
1000A	10	15
1200A	12	15
1250A	12	15
1500A	15	20
1600A	15	20
2000A	20	25
2500A	25	30

Cat. Nos.	Accessories
	Description
ATACOP04	Accessory sealable terminal cover
ATADIS03	profile for 50mm bars (for TAS65)
ATADIS01	profile for 60mm bars (for TAS84)
ATAFIS01	2 metallic feet for wall mounting (for TAS65)

Technical features

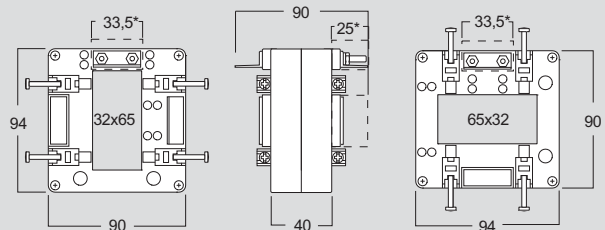
MODEL	TAS65	TAS84
TECHNICAL NOTES	NT518	NT574
SPECIFICATIONS		
Reference specification	EN/IEC 61869-1, 61869-2	
Rated primary current I _{pr} :	250...2000A	300...2500A
Rated frequency:	50Hz	
Working frequency:	47...63Hz	
Rated continuous thermal current I _{cth} :	100% I _{pr}	
Rated short-time thermal current I _{th} :	< 60I _{pr}	
Rated dynamic current I _{dyn} :	2,5I _{th}	
Instrument security factor (FS):	≤ 5	
Rated secondary current I _{sr} :	5 - 1A	
Max. power dissipation	≤ 20W	≤ 19W
Allowed max cable or busbar temperature:	125°C	
INSULATION REQUIREMENTS		
Type	Dry transformer, air insulation	
Highest voltage for equipment U _m :	0.72kV r.m.s.	
Rated insulation level:	3kV r.m.s. 50Hz/1min	
Class of insulation (EN/IEC 61869-1, 61869-2):	B	
ENVIRONMENTAL CONDITIONS		
Nominal temperature range:	-25...50°C	
Limit temperature range for storage:	-40...85°C	
Relative humidity:	≤ 85%	
Suitable for tropical climates	yes	
CONNECTION		
Primary winding:	Passing bus bar	
Secondary winding:	tightening by nut M4	
MECHANICAL FEATURES		
Housing material:	self extinguishing polycarbonate	
Protection degree (EN/IEC 60529):	P40 housing - IP00 terminals (IP20 with sealable terminal cover)	
Mounting:	screw type on bar	
Weight:	750 gr	750 gr

Wiring diagrams

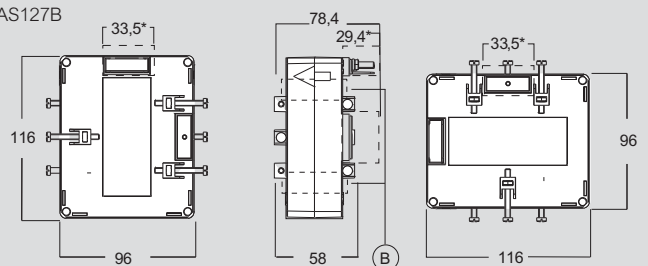


Dimensions

TAS127



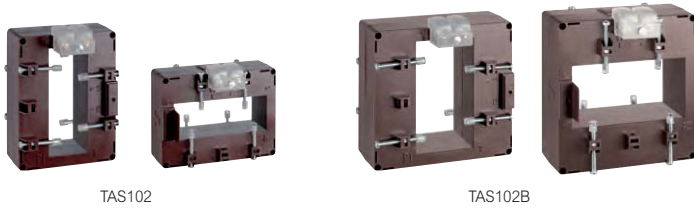
TAS127B



*OptionB = Spacing device

Current transformers - MEASURE

Cable/passing bar single-phase current transformer



TAS102

TAS102B

Cat. Nos.				Primary current (A)	Accuracy class VA	
Bars in VERTICAL		Bars in HORIZONTAL			cl. 0.5	cl. 1
Isr 5A	Isr 1A	Isr 5A	Isr 1A			
TAMP50C800	TAMP10C800	TAMP50C8003	TAMP10C8003	800A	8	10
TAMP50D100	TAMP10D100	TAMP50D1003	TAMP10D1003	1000A	10	12
TAMP50D120	TAMP10D120	TAMP50D1203	TAMP10D1203	1200A	12	15
TAMP50D125	TAMP10D125	TAMP50D1253	TAMP10D1253	1250A	12	15
TAMP50D150	TAMP10D150	TAMP50D1503	TAMP10D1503	1500A	12	15
TAMP50D160	TAMP10D160	TAMP50D1603	TAMP10D1603	1600A	12	15
TAMP50D200	TAMP10D200	TAMP50D2003	TAMP10D2003	2000A	20	25
TAMP50D250	TAMP10D250	TAMP50D2503	TAMP10D2503	2500A	20	25
TAMP50D300	TAMP10D300	TAMP50D3003	TAMP10D3003	3000A	20	25

TAS102
 Passing cable window/bar
 38x102mm and 102x38mm -
 long side terminals

Cat. Nos.				Primary current (A)	Accuracy class VA	
Bars in VERTICAL		Bars in HORIZONTAL			cl. 0.5	cl. 1
Isr 5A	Isr 1A	Isr 5A	Isr 1A			
TAMQ50C800	TAMQ10C800	TAMQ50C8003	TAMQ10C8003	800A	10	12
TAMQ50D100	TAMQ10D100	TAMQ50D1003	TAMQ10D1003	1000A	12	15
TAMQ50D120	TAMQ10D120	TAMQ50D1203	TAMQ10D1203	1200A	15	20
TAMQ50D125	TAMQ10D125	TAMQ50D1253	TAMQ10D1253	1250A	15	20
TAMQ50D150	TAMQ10D150	TAMQ50D1503	TAMQ10D1503	1500A	20	25
TAMQ50D160	TAMQ10D160	TAMQ50D1603	TAMQ10D1603	1600A	20	25
TAMQ50D200	TAMQ10D200	TAMQ50D2003	TAMQ10D2003	2000A	20	25
TAMQ50D250	TAMQ10D250	TAMQ50D2503	TAMQ10D2503	2500A	25	30
TAMQ50D300	TAMQ10D300	TAMQ50D3003	TAMQ10D3003	3000A	25	30
TAMQ50D320	TAMQ10D320	TAMQ50D3203	TAMQ10D3203	3200A	25	30
TAMQ50D400	TAMQ10D400	TAMQ50D4003	TAMQ10D4003	4000A	30	40

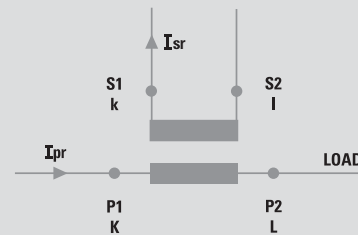
TAS102B
 Passing cable window/bar
 54x102mm and 102x54mm -
 long side terminals

Cat. Nos.	Accessories
	Description
ATACOP04	Accessory sealable terminal cover
ATAFIS01	Screw type for wall mounting

Technical features

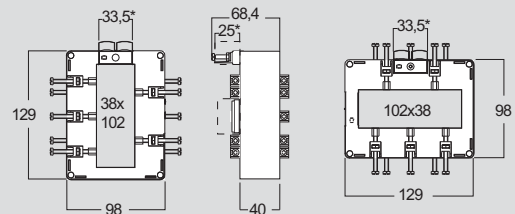
MODEL	TAS102	TAS102B
TECHNICAL NOTES	NT766	NT767
SPECIFICATIONS		
Reference specification	EN/IEC 61869-1, 61869-2	
Rated primary current I _{pr} :	800...3000A	800...4000A
Rated frequency:	50Hz	
Working frequency:	47...63Hz	
Rated continuous thermal current I _{cth} :	100% I _{pr}	
Rated short-time thermal current I _{th} :	< 60I _{pr}	
Rated dynamic current I _{dyn} :	2,5I _{th}	
Instrument security factor (FS):	≤ 5	
Rated secondary current I _{sr} :	5 - 1A	
Max. power dissipation	≤ 25W	≤ 25W
Allowed max cable or busbar temperature:	125°C	
INSULATION REQUIREMENTS		
Type	Dry transformer, air insulation	
Highest voltage for equipment U _m :	0.72kV r.m.s.	
Rated insulation level:	3kV r.m.s. 50Hz/1min	
Class of insulation (EN/IEC 61869-1, 61869-2):	B	
ENVIRONMENTAL CONDITIONS		
Nominal temperature range:	-25...50°C	
Limit temperature range for storage:	-40...85°C	
Relative humidity:	≤ 85%	
Suitable for tropical climates	yes	
CONNECTION		
Primary winding:	Passing bus bar	
Secondary winding:	tightening by nut M4	
MECHANICAL FEATURES		
Housing material:	self extinguishing polycarbonate	
Protection degree (EN/IEC 60529):	P40 housing - IP00 terminals (IP20 with sealable terminal cover)	
Mounting:	screw type on bar	
Weight:	1000 gr	1200 gr

Wiring diagrams

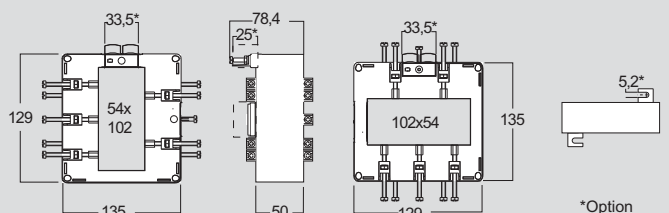


Dimensions

TAS102



TAS102B



Current transformers - MEASURE

Cable/passing bar single-phase current transformer



TAS127



TAS127B

Cat. Nos.				Primary current (A)	Accuracy class VA	
Bars in VERTICAL		Bars in HORIZONTAL			cl. 0.5	cl. 1
Isr 5A	Isr 1A	Isr 5A	Isr 1A	Passing cable window/bar 38x127mm and 127x38mm - long side terminals		
TASR50C400	TASR10C400	TASR50C4003	TASR10C4003	400A	-	3
TASR50C500	TASR10C500	TASR50C5003	TASR10C5003	500A	2	4
TASR50C600	TASR10C600	TASR50C6003	TASR10C6003	600A	4	6
TASR50C700	TASR10C700	TASR50C7003	TASR10C7003	700A	4	8
TASR50C750	TASR10C750	TASR50C7503	TASR10C7503	750A	4	8
TASR50C800	TASR10C800	TASR50C8003	TASR10C8003	800A	4	8
TASR50D100	TASR10D100	TASR50D1003	TASR10D1003	1000A	6	10
TASR50D120	TASR10D120	TASR50D1203	TASR10D1203	1200A	8	12
TASR50D125	TASR10D125	TASR50D1253	TASR10D1253	1250A	8	12
TASR50D150	TASR10D150	TASR50D1503	TASR10D1503	1500A	10	15
TASR50D160	TASR10D160	TASR50D1603	TASR10D1603	1600A	10	15
TASR50D200	TASR10D200	TASR50D2003	TASR10D2003	2000A	15	20
TASR50D250	TASR10D250	TASR50D2503	TASR10D2503	2500A	20	25
TASR50D300	TASR10D300	TASR50D3003	TASR10D3003	3000A	25	30
TASR50D320	TASR10D320	TASR50D3203	TASR10D3203	3200A	25	30
TASR50D400	TASR10D400	TASR50D4003	TASR10D4003	4000A	25	30

TAS127

Passing cable window/bar
38x127mm and 127x38mm -
long side terminals

Cat. Nos.				Primary current (A)	Accuracy class VA	
Bars in VERTICAL		Bars in HORIZONTAL			cl. 0.5	cl. 1
Isr 5A	Isr 1A	Isr 5A	Isr 1A	Passing cable window/bar 54x127mm and 127x54mm - long side terminals		
TASS50C4003	TASS10C4003	TASS50C4003	TASS10C4003	400A	1	7
TASS50C5003	TASS10C5003	TASS50C5003	TASS10C5003	500A	3	10
TASS50C6003	TASS10C6003	TASS50C6003	TASS10C6003	600A	5	12
TASS50C7003	TASS10C7003	TASS50C7003	TASS10C7003	700A	8	15
TASS50C7503	TASS10C7503	TASS50C7503	TASS10C7503	750A	10	15
TASS50C8003	TASS10C8003	TASS50C8003	TASS10C8003	800A	10	15
TASS50D1003	TASS10D1003	TASS50D1003	TASS10D1003	1000A	12	20
TASS50D1203	TASS10D1203	TASS50D1203	TASS10D1203	1200A	15	25
TASS50D1253	TASS10D1253	TASS50D1253	TASS10D1253	1250A	15	25
TASS50D1503	TASS10D1503	TASS50D1503	TASS10D1503	1500A	20	30
TASS50D1603	TASS10D1603	TASS50D1603	TASS10D1603	1600A	20	30
TASS50D2003	TASS10D2003	TASS50D2003	TASS10D2003	2000A	25	30
TASS50D2503	TASS10D2503	TASS50D2503	TASS10D2503	2500A	30	50
TASS50D3003	TASS10D3003	TASS50D3003	TASS10D3003	3000A	30	50
TASS50D3203	TASS10D3203	TASS50D3203	TASS10D3203	3200A	30	50
TASS50D4003	TASS10D4003	TASS50D4003	TASS10D4003	4000A	30	50

TAS127B

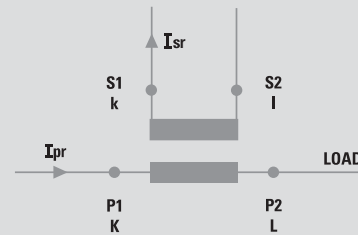
Passing cable window/bar
54x127mm and 127x54mm -
long side terminals

Cat. Nos.	Accessories	Description
ATACOP04	Accessory sealable terminal cover	
ATADIS02	Spacing device for bars of 100 mm	
ATAFIS01	Screw type for wall mounting	

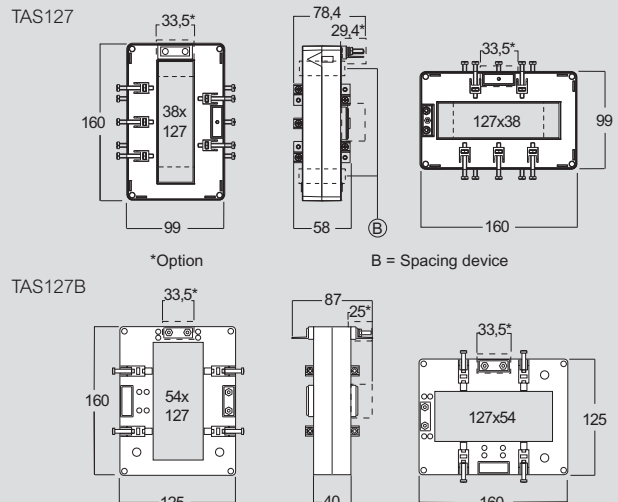
Technical features

MODEL	TAS127	TAS127B
TECHNICAL NOTES	NT522	NT523
SPECIFICATIONS		
Reference specification	EN/IEC 61869-1, 61869-2	
Rated primary current I _{pr} :	400...4000A	800...4000A
Rated frequency:	50Hz	
Working frequency:	47...63Hz	
Rated continuous thermal current I _{cth} :	100% I _{pr}	
Rated short-time thermal current I _{th} :	< 60I _{pr}	
Rated dynamic current I _{dyn} :	2,5I _{th}	
Instrument security factor (FS):	≤ 5	
Rated secondary current I _{sr} :	5 - 1A	
Max. power dissipation	≤ 23W	≤ 23W
Allowed max cable or busbar temperature:	125°C	
INSULATION REQUIREMENTS		
Type	Dry transformer, air insulation	
Highest voltage for equipment U _m :	0.72kV r.m.s.	
Rated insulation level:	3kV r.m.s. 50Hz/1min	
Class of insulation (EN/IEC 61869-1, 61869-2):	B	
ENVIRONMENTAL CONDITIONS		
Nominal temperature range:	-25...50°C	
Limit temperature range for storage:	-40...85°C	
Relative humidity:	≤ 85%	
Suitable for tropical climates	yes	
CONNECTION		
Primary winding:	Passing bus bar	
Secondary winding:	tightening by nut M4	
MECHANICAL FEATURES		
Housing material:	self extinguishing polycarbonate	
Protection degree (EN/IEC 60529):	P40 housing - IP00 terminals (IP20 with sealable terminal cover)	
Mounting:	screw type on bar	
Weight:	1500 gr	1300 gr

Wiring diagrams



Dimensions



Current transformers - MEASURE

Cable/passing bar single-phase current transformer



TAU9



TAU10



TAU11



TAU12



TAU13

Cat. Nos.	
Isr 5A	Isr 1A
TAUB50D150	TAUB10D150
TAUB50D200	TAUB10D200
TAUB50D250	TAUB10D250
TAUB50D300	TAUB10D300
TAUB50D400	TAUB10D400
TAUB50D500	TAUB10D500

TAU9

Passing cable window/bar 55x165mm	
Primary current (A)	Accuracy class VA cl. 0.5
1500A	20
2000A	30
2500A	40
3000A	40
4000A	50
5000A	60

Cat. Nos.	
Isr 5A	Isr 1A
TAUE50D250	TAUE10D250
TAUE50D300	TAUE10D300
TAUE50D400	TAUE10D400
TAUE50D500	TAUE10D500
TAUE50D600	TAUE10D600
TAUE50D800	TAUE10D800

TAU12

Passing cable window/bar 55x225mm	
Primary current (A)	Accuracy class VA cl. 0.5
2500A	40
3000A	40
4000A	50
5000A	60
6000A	70
8000A	70

Cat. Nos.	
Isr 5A	Isr 1A
TAUC50D150	TAUC10D150
TAUC50D200	TAUC10D200
TAUC50D250	TAUC10D250
TAUC50D300	TAUC10D300
TAUC50D400	TAUC10D400
TAUC50D500	TAUC10D500
TAUC50D600	TAUC10D600

TAU10

Passing cable window/bar 120x125mm	
Primary current (A)	Accuracy class VA cl. 0.5
1500A	20
2000A	30
2500A	40
3000A	40
4000A	50
5000A	60
6000A	70

Cat. Nos.	
Isr 5A	Isr 1A
TAUF50D250	TAUF10D250
TAUF50D300	TAUF10D300
TAUF50D400	TAUF10D400
TAUF50D500	TAUF10D500
TAUF50D600	TAUF10D600
TAUF50D800	TAUF10D800

TAU13

Passing cable window/bar 120x225mm	
Primary current (A)	Accuracy class VA cl. 0.5
2500A	40
3000A	40
4000A	50
5000A	60
6000A	70
8000A	70

Cat. Nos.	
Isr 5A	Isr 1A
TAUD50D150	TAUD10D150
TAUD50D200	TAUD10D200
TAUD50D250	TAUD10D250
TAUD50D300	TAUD10D300
TAUD50D400	TAUD10D400
TAUD50D500	TAUD10D500
TAUD50D600	TAUD10D600
TAUD50D800	TAUD10D800

TAU11

Passing cable window/bar 120x165mm	
Primary current (A)	Accuracy class VA cl. 0.5
1500A	20
2000A	30
2500A	40
3000A	40
4000A	50
5000A	60
6000A	70
8000A	70

Cat. Nos.
ATACOP05

Accessories

Description
Accessory sealable terminal cover

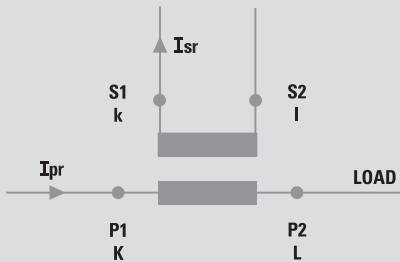
Current transformers - MEASURE

Cable/passing bar single-phase current transformer

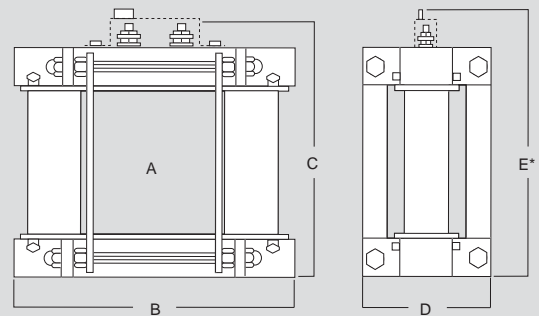
Technical features

MODEL	TAU9	TAU10	TAU11	TAU12	TAU13
TECHNICAL NOTES	NT520	NT717	NT719	NT819	NT820
SPECIFICATIONS					
Reference specification	EN/IEC 61869-1, 61869-2				
Rated primary current I _{pr} :	1500...5000A	1500...6000A	1500...8000A	2500...8000A	2500...8000A
Rated frequency:	50Hz				
Working frequency:	47...63Hz				
Rated continuous thermal current I _{cth} :	100% I _{pr}				
Rated short-time thermal current I _{th} :	< 60I _{pr}				
Rated dynamic current I _{dyn} :	2,5I _{th}				
Instrument security factor (FS):	≤ 5				
Rated secondary current I _{sr} :	5 - 1A				
Max. power dissipation	≤ 43W	≤ 43W	≤ 81W	≤ 75W	≤ 70W
Allowed max cable or busbar temperature:	125°C				
INSULATION REQUIREMENTS					
Type	Dry transformer, air insulation				
Highest voltage for equipment U _m :	0.72kV r.m.s.				
Rated insulation level:	3kV r.m.s. 50Hz/1min				
Class of insulation (EN/IEC 61869-1, 61869-2):	B				
ENVIRONMENTAL CONDITIONS					
Nominal temperature range:	-25...50°C				
Limit temperature range for storage:	-40...85°C				
Relative humidity:	≤ 85%				
Suitable for tropical climates	yes				
CONNECTION					
Primary winding:	Passing bus bar				
Secondary winding	tightening by nut M5				
MECHANICAL FEATURES					
Housing material:	self extinguishing polycarbonate				
Protection degree (EN/IEC 60529):	IP20 housing, IP00 terminals (IP20 with sealable terminal cover)				
Mounting:	screw type on bar				
Weight:	5000 gr	5700 gr	6700 gr	5000 gr	5000 gr

Wiring diagrams



Dimensions



* option

Dim. (mm)	A	B	C	D	E
TAU9	55x165	177	261	110	273.5
TAU10	120x125	257	221	110	233.5
TAU11	120x165	257	261	110	273.5
TAU12	55x225	177	321	110	333.5
TAU13	120x225	257	321	110	333.5