



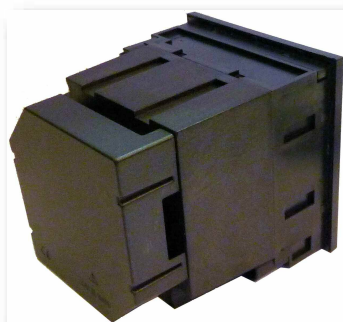
**AN**

**Indicatori Analogici  
AQMrad  
per corrente alternata  
48x48mm  
72x72mm  
96x96mm**

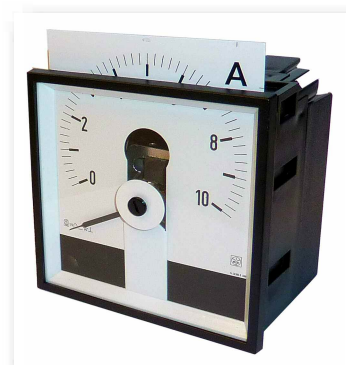
**AQMrad  
Analog Meters  
for alternating current  
48x48mm  
72x72mm  
96x96mm**

Indicazione diretta della corrente di ingresso o della corrente primaria del TA esterno  
Equipaggio a bobina mobile, con accessorio raddrizzatore  
Ingresso diretto 1...5A  
Ingresso da TA esterno /5A oppure /1A  
Versione per avviamento motore 2In opp. 5In  
Ampiezza scala 240°  
Precisione cl.1,5

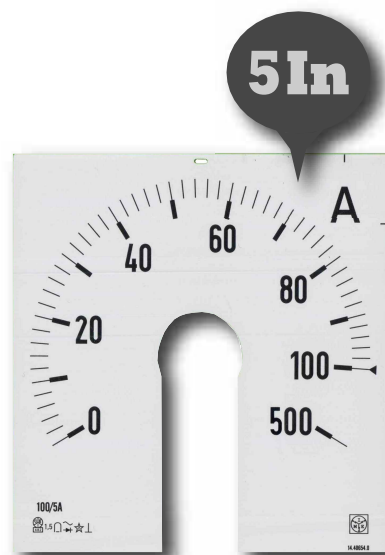
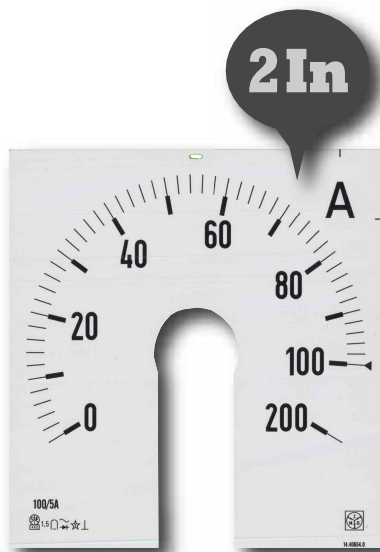
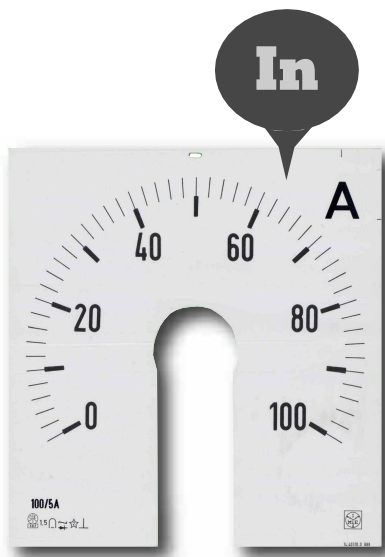
Direct indication of input current or primary current of external CT  
Moving coil equipment, with rectifier accessory  
Direct connection 1...5A  
Input by external CT /5A or /1A  
Version for starting motor 2In or 5In  
Scale length 240°  
Accuracy class 1,5



**AQ72M - AQ96M  
Coprिमorsetto di serie  
Standard terminal cover**



**Scala intercambiabile  
Interchange scales**



Inserzione Connection	da TA/5A on CT/5A			da TA/1A on CT/1A		
	0...In			0...In		
Modello / Model	AQ48Mrad	AQ72Mrad	AQ96Mrad	AQ48Mrad	AQ72Mrad	AQ96Mrad
Dimensioni Dimensions	48 x 48	72 x 72	96 x 96	48 x 48	72 x 72	96 x 96
Portata / Range	CODICE DI ORDINAZIONE / ORDERING CODE					
Senza scala Without scale	AN51510000	AN61510000	AN71510000	AN51110000	AN61110000	AN71110000
5A	AN51D1A500	AN61D1A500	AN71D1A500	AN5111A500	AN6111A500	AN7111A500
10A	AN5151B100	AN6151B100	AN7151B100	AN5111B100	AN6111B100	AN7111B100
15A	AN5151B150	AN6151B150	AN7151B150	AN5111B150	AN6111B150	AN7111B150
20A	AN5151B200	AN6151B200	AN7151B200	AN5111B200	AN6111B200	AN7111B200
25A	AN5151B250	AN6151B250	AN7151B250	AN5111B250	AN6111B250	AN7111B250
30A	AN5151B300	AN6151B300	AN7151B300	AN5111B300	AN6111B300	AN7111B300
40A	AN5151B400	AN6151B400	AN7151B400	AN5111B400	AN6111B400	AN7111B400
50A	AN5151B500	AN6151B500	AN7151B500	AN5111B500	AN6111B500	AN7111B500
60A	AN5151B600	AN6151B600	AN7151B600	AN5111B600	AN6111B600	AN7111B600
70A	AN5151B700	AN6151B700	AN7151B700	AN5111B700	AN6111B700	AN7111B700
75A	AN5151B750	AN6151B750	AN7151B750	AN5111B750	AN6111B750	AN7111B750
80A	AN5151B800	AN6151B800	AN7151B800	AN5111B800	AN6111B800	AN7111B800
100A	AN5151C100	AN6151C100	AN7151C100	AN5111C100	AN6111C100	AN7111C100
120A	AN5151C120	AN6151C120	AN7151C120	AN5111C120	AN6111C120	AN7111C120
125A	AN5151C125	AN6151C125	AN7151C125	AN5111C125	AN6111C125	AN7111C125
150A	AN5151C150	AN6151C150	AN7151C150	AN5111C150	AN6111C150	AN7111C150
160A	AN5151C160	AN6151C160	AN7151C160	AN5111C160	AN6111C160	AN7111C160
200A	AN5151C200	AN6151C200	AN7151C200	AN5111C200	AN6111C200	AN7111C200
250A	AN5151C250	AN6151C250	AN7151C250	AN5111C250	AN6111C250	AN7111C250
300A	AN5151C300	AN6151C300	AN7151C300	AN5111C300	AN6111C300	AN7111C300
400A	AN5151C400	AN6151C400	AN7151C400	AN5111C400	AN6111C400	AN7111C400
500A	AN5151C500	AN6151C500	AN7151C500	AN5111C500	AN6111C500	AN7111C500
600A	AN5151C600	AN6151C600	AN7151C600	AN5111C600	AN6111C600	AN7111C600
700A	AN5151C700	AN6151C700	AN7151C700	AN5111C700	AN6111C700	AN7111C700
750A	AN5151C750	AN6151C750	AN7151C750	AN5111C750	AN6111C750	AN7111C750
800A	AN5151C800	AN6151C800	AN7151C800	AN5111C800	AN6111C800	AN7111C800
1.000A	AN5151D100	AN6151D100	AN7151D100	AN5111D100	AN6111D100	AN7111D100
1.200A	AN5151D120	AN6151D120	AN7151D120	AN5111D120	AN6111D120	AN7111D120
1.250A	AN5151D125	AN6151D125	AN7151D125	AN5111D125	AN6111D125	AN7111D125
1.500A	AN5151D150	AN6151D150	AN7151D150	AN5111D150	AN6111D150	AN7111D150
1.600A	AN5151D160	AN6151D160	AN7151D160	AN5111D160	AN6111D160	AN7111D160
2.000A	AN5151D200	AN6151D200	AN7151D200	AN5111D200	AN6111D200	AN7111D200
2.500A	AN5151D250	AN6151D250	AN7151D250	AN5111D250	AN6111D250	AN7111D250
3.000A	AN5151D300	AN6151D300	AN7151D300	AN5111D300	AN6111D300	AN7111D300
4.000A	AN5151D400	AN6151D400	AN7151D400	AN5111D400	AN6111D400	AN7111D400
5.000A	AN5151D500	AN6151D500	AN7151D500	AN5111D500	AN6111D500	AN7111D500
6.000A	AN5151D600	AN6151D600	AN7151D600	AN5111D600	AN6111D600	AN7111D600
8.000A	AN5151D800	AN6151D800	AN7151D800	AN5111D800	AN6111D800	AN7111D800
10.000A	AN5151E100	AN6151E100	AN7151E100	AN5111E100	AN6111E100	AN7111E100

Inserzione Connection	0...In - DIRETTA / DIRECT		
Modello Model	AQ48Mrad	AQ72Mrad	AQ96Mrad
Dimensioni Dimensions	48 x 48	72 x 72	96 x 96
Portata Range	CODICE DI ORDINAZIONE / ORDERING CODE		
1A	AN51D1A100	AN61D1A100	AN71D1A100
2,5A	AN51D1A250	AN61D1A250	AN71D1A250
5A	AN51D1A500	AN61D1A500	AN71D1A500

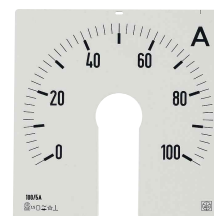
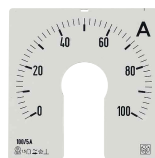
Altre esecuzioni disponibili su tutti i modelli:

Other executions available on all models:

Opzione / Option	Suffisso / Suffix	Esempio / Example
Tropicalizzato Tropicalized	Aggiungere "1" al codice standard Add "1" at the end of standard code	AN6151C500 → AN6151C5001
Protezione frontale IP54 IP54 Front protection	Aggiungere "3" al codice standard Add "3" at the end of standard code	AN6151C500 → AN6151C5003

Modello Model	Scala per / Scale for AQ48Mrad	Scala per / Scale for AQ72Mrad	Scala per / Scale for AQ96Mrad
------------------	-----------------------------------	-----------------------------------	-----------------------------------

Scala  
Scale



0...In	per amperometri su TA/5A / for CT/5A ammeters		
--------	---	--	--

Portata / Range

CODICE DI ORDINAZIONE / ORDERING CODE

5/5A	SC51D1A500	SC61D1A500	SC71D1A500
10/5A	SC5151B100	SC6151B100	SC7151B100
15/5A	SC5151B150	SC6151B150	SC7151B150
20/5A	SC5151B200	SC6151B200	SC7151B200
25/5A	SC5151B250	SC6151B250	SC7151B250
30/5A	SC5151B300	SC6151B300	SC7151B300
40/5A	SC5151B400	SC6151B400	SC7151B400
50/5A	SC5151B500	SC6151B500	SC7151B500
60/5A	SC5151B600	SC6151B600	SC7151B600
70/5A	SC5151B700	SC6151B700	SC7151B700
75/5A	SC5151B750	SC6151B750	SC7151B750
80/5A	SC5151B800	SC6151B800	SC7151B800
100/5A	SC5151C100	SC6151C100	SC7151C100
120/5A	SC5151C120	SC6151C120	SC7151C120
125/5A	SC5151C125	SC6151C125	SC7151C125
150/5A	SC5151C150	SC6151C150	SC7151C150
160/5A	SC5151C160	SC6151C160	SC7151C160
200/5A	SC5151C200	SC6151C200	SC7151C200
250/5A	SC5151C250	SC6151C250	SC7151C250
300/5A	SC5151C300	SC6151C300	SC7151C300
400/5A	SC5151C400	SC6151C400	SC7151C400
500/5A	SC5151C500	SC6151C500	SC7151C500
600/5A	SC5151C600	SC6151C600	SC7151C600
700/5A	SC5151C700	SC6151C700	SC7151C700
750/5A	SC5151C750	SC6151C750	SC7151C700
800/5A	SC5151C800	SC6151C800	SC7151C800
1000/5A	SC5151D100	SC6151D100	SC7151D100
1200/5A	SC5151D120	SC6151D120	SC7151D120
1250/5A	SC5151D125	SC6151D125	SC7151D125
1500/5A	SC5151D150	SC6151D150	SC7151D150
1600/5A	SC5151D160	SC6151D160	SC7151D160
2000/5A	SC5151D200	SC6151D200	SC7151D160
2500/5A	SC5151D250	SC6151D250	SC7151D250
3000/5A	SC5151D300	SC6151D300	SC7151D300
4000/5A	SC5151D400	SC6151D400	SC7151D400
5000/5A	SC5151D500	SC6151D500	SC7151D500
6000/5A	SC5151D600	SC6151D600	SC7151D600
8000/5A	SC5151D800	SC6151D800	SC7151D800
10000/5A	SC5151E100	SC6151E100	SC7151E100

Altre esecuzioni disponibili su tutti i modelli:

Other executions available on all models:

Versione / Version	Suffisso / Suffix	Esempio / Example
Scala ristretta al fondo 2In 2In overscale	Sostituire la 6ª cifra del codice (1) con <b>2</b> Replace the 6 <sup>o</sup> digit of the code (1) with <b>2</b>	SC5151C500 ⇒ SC515 <b>2</b> C500
Scala ristretta al fondo 5In 5In overscale	Sostituire la 6ª cifra del codice (1) con <b>5</b> Replace the 6 <sup>o</sup> digit of the code (1) with <b>5</b>	SC5151C500 ⇒ SC515 <b>5</b> C500
Inserzione su TA/1A CT/1A connection	Sostituire la 5ª cifra del codice (5) con <b>1</b> Replace the 5 <sup>o</sup> digit of the code (5) with <b>1</b>	SC51 <b>5</b> 1C500 ⇒ SC51 <b>1</b> 1C500

## VISUALIZZAZIONE

**Scala:** intercambiabile, con inserimento guidato a protezione dell'indice e cassetto di chiusura

**Colore scala:** fondo bianco, divisioni e numerazione nere

**A richiesta scale personalizzate**

**Opzioni:** segno rosso di riferimento

**Ampiezza scala:** 240°

**Tracciatura standard:** 0...In

**Tracciatura avviamento motore:** 0...In...2In opp. 0...In...5In

**Colore indice:** nero

**Opzione:** indice rosso di riferimento (regolabile)

## INGRESSO

**Grandezza:** corrente alternata monofase

**Inserzione:** diretta (S 250/130 - /132) o da TA esterno /5A opp. /1A (S 250/131 - /133)

**Misura:** valor medio, rapportato al valore efficace, fattore di forma 1,11

**Corrente nominale In**

**Inserzione diretta:** 1...5A (vedi tabella)

**Inserzione da TA esterno:** 5A oppure 1A

**Sovraccarico permanente:** 1,2In

**Sovraccarico istantaneo:** 10In/5s

**Frequenza nominale fn:** 50Hz

**Frequenza di funzionamento:** 45...65Hz

**Precisione (EN/IEC 60051):** cl.1,5

**Autoconsumo:** ≤ 1,1VA

## ISOLAMENTO

(EN/IEC

61010-1)

**Categoria di installazione:** III

**Grado di inquinamento:** 2

**Tensione di riferimento per l'isolamento:** 600V (Fase - Neutro)

**Prova a tensione alternata 4kV valore efficace 50Hz/5s**

**Circuiti considerati:** tutti i circuiti verso terra

## CONDIZIONI AMBIENTALI

**Temperatura di riferimento:** 23°C

**Campo nominale di utilizzo:** 5...40°C

**Campo di funzionamento:** -25...50°C

**Campo limite per l'immagazzinamento e trasporto:** -40...80°C

**Prova di vibrazioni:** in accordo con EN/IEC 60051-1 paragrafo 7.6

**Prova d'urto:** in accordo con EN/IEC 60051-1 paragrafo 7.6

## CUSTODIA

**Fissaggio:** incasso

**Foratura pannello:** vedi tabella

**Frontale:** vedi tabella

**Profondità:** vedi tabella

**Conessioni:** morsetti a vite / faston 6,3 x 0,8mm (AQ48Mrad solo faston)

**Materiale custodia:** policarbonato autoestinguente

**Grado di protezione(EN/IEC 60529):** IP52 frontale, IP20 morsetti (con coprimorsetto)

**Opzione:** protezione frontale IP54

**Peso:** vedi tabella

## DISPLAY

**Scale:** interchangeable, easy-insertion to protect the pointer as well as relevant closing slip

**Scale colour:** white background, black divisions and numbering

**Customized scales upon request**

**Option:** reference red mark

**Scale length:** 240°

**Standard scale marking:** 0...In

**Motor startup marking scale:** 0...In...2In or 0...In...5In

**Pointer colour:** black

**Option:** (adjustable) reference red pointer

## INPUT

**Quantity:** single-phase, alternating current

**Connection:** direct (S 250/130 - /132) or by external CT /5A or /1A (S 250/131 - /133)

**Measure:** average value measurement, related to r.m.s value, form factor 1,11

**Rating current In**

**Direct connection:** 1...5A (see table)

**Connection by CT external:** 5A or 1A

**Continuous overload:** 1,2In

**Instantaneous overload:** 10In/5s

**Rating frequency fn:** 50Hz

**Working frequency:** 45...65Hz

**Accuracy (EN/IEC 60051):** class 1,5

**Rated burden:** ≤ 1,1VA

## INSULATION

(EN/IEC 61010-1)

**Installation category:** III

**Pollution degree:** 2

**Insulation voltage rating:** 600V (Phase - Neutral)

**A.C. voltage test 4kV r.m.s. 50Hz/5s**

**Considered circuits:** all circuits and earth

## ENVIRONMENTAL CONDITIONS

**Reference temperature:** 23°C

**Nominal range of use:** 5...40°C

**Operating range:** -25...50°C

**Limit range for storage and transport:** -40...80°C

**Vibration test:** according to EN/IEC 60051-1 paragraph 7.6

**Shock test:** according to EN/IEC 60051-1 paragraph 7.6

## HOUSING

**Mounting:** flush mounting

**Panel cutout:** see table

**Front frame:** see table

**Depth:** see table

**Connections:** screw terminal / fast-on 6,3 x 0,8mm (AQ48Mrad only fast-on)

**Housing material:** self-extinguishing polycarbonate

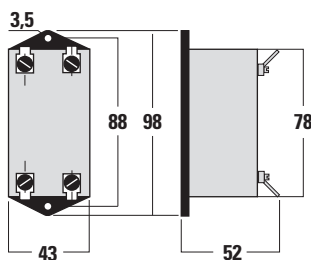
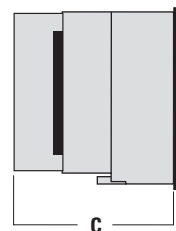
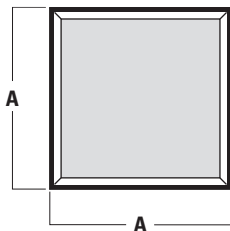
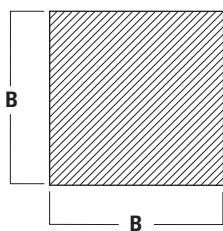
**Protection degree (EN/IEC 60529):** IP52 front frame, IP20 terminals (with protection)

**Option:** protection IP54 front frame

**Weight:** see table

Modello / Model	Schemi / Diagrams	A	B	C	Peso / Weight
AQ48Mrad	S 250 / 130 - 131	48x48	45x45	85,5	250 gr.
AQ72Mrad	S 250 / 132 -133	72x72	68x68	84	300 gr.
AQ96Mrad		96x96	92x92	84	350 gr.

**DIMENSIONI DIMENSIONS**



Accessorio raddrizzatore per AQ48Mrad

Rectifier accessory for AQ48Mrad

**SCHEMI D'INSERIONE WIRING DIAGRAMS**

